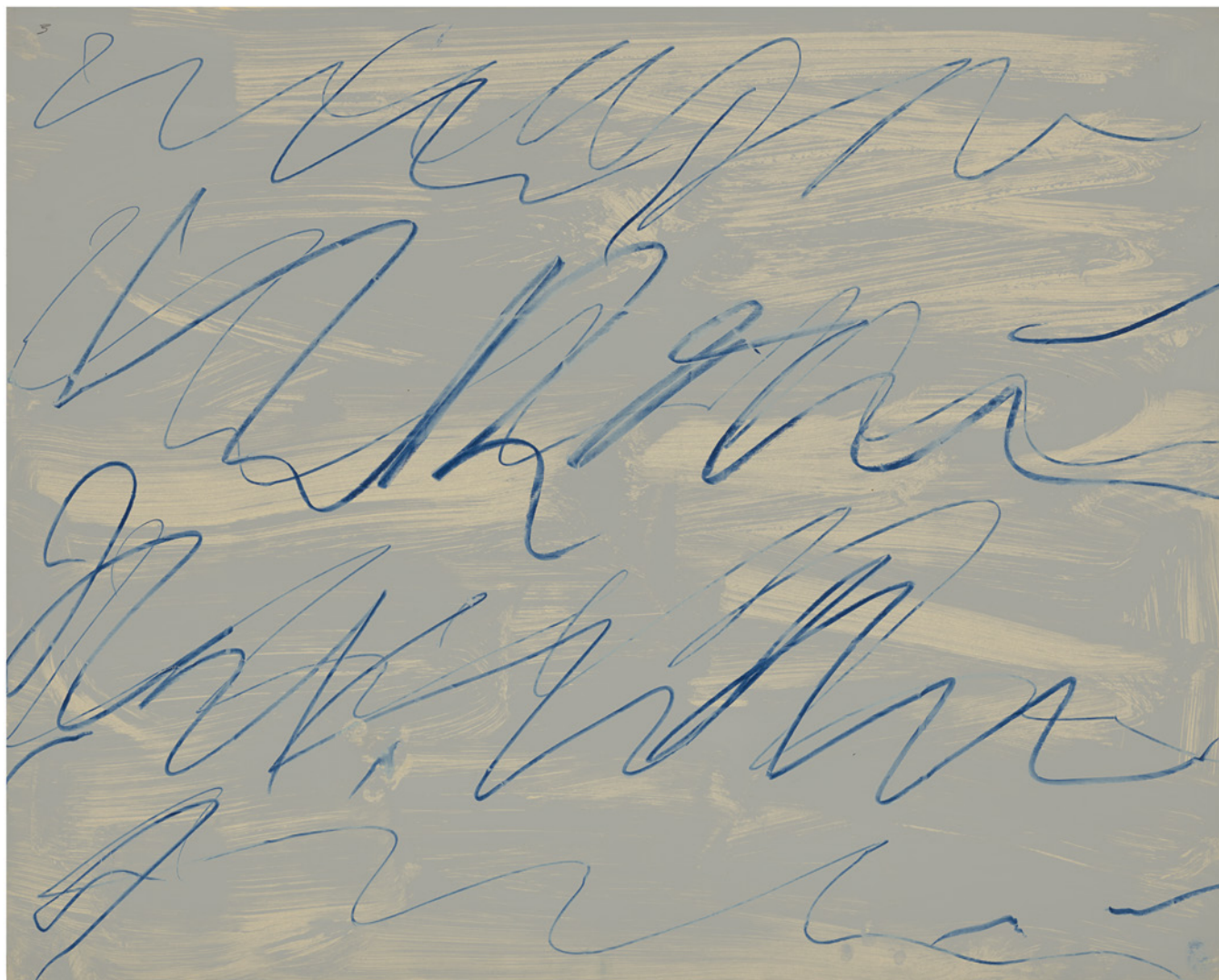


CHRISTIE'S



POST-WAR TO PRESENT

NEW YORK | 13 MARCH 2024





POST-WAR TO PRESENT

AUCTION

Wednesday 15 March 2024

Session I at 10:00 am
Lots 101-219

Session II at 2:00 pm
Lots 301-428

20 Rockefeller Plaza
New York, NY 10020

VIEWING

Thursday	7 March	10.00am-5.00pm
Friday	8 March	10.00am-5.00pm
Saturday	9 March	10.00am-5.00pm
Sunday	10 March	1.00pm-5.00pm
Monday	11 March	10.00am-5.00pm
Tuesday	12 March	10.00am-5.00pm

AUCTION CODE AND NUMBER

In sending absentee bids or making enquiries, this sale should be referred to as
BLUEBERRY-22899

ABSENTEE AND TELEPHONE BIDS

Tel: +1 212 636 2437

CONDITIONS OF SALE

The sale of each lot is subject to the Conditions of Sale, Important Notices and Explanation of Cataloguing Practice, which are set out in this catalogue and on christies.com. Please note that the symbols and cataloguing for some lots may change before the auction. For the most up to date sale information for a lot, please see the full lot description, which can be accessed through the sale landing page on christies.com.



Please scan for complete auction information

CHRISTIE'S



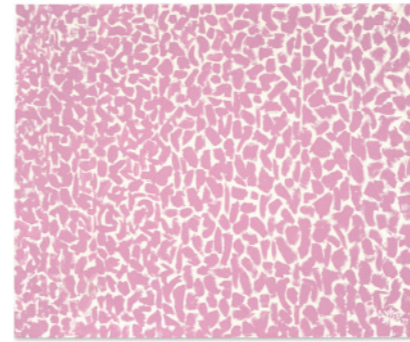
101
LOIS DODD (B. 1927)
Green Door and Bed
 oil on canvas
 44 x 50 in. (111.8 x 127 cm.)
 Painted in 1994.
 \$60,000-80,000



102
DANIELLE MCKINNEY (B. 1981)
Home by 8
 signed 'D. McKinney' (on the reverse)
 acrylic on canvas
 20 x 16 in. (50.8 x 40.6 cm.)
 Painted in 2021.
 \$50,000-70,000



103
JOAN BROWN (1938-1990)
A New Year's Eve Drink
 signed, titled and dated 'Joan Brown a New Year's Eve drink 73' (on the reverse)
 oil on canvas
 23 3/8 x 18 in. (60.6 x 45.7 cm.)
 Painted in 1973.
 \$8,000-12,000



107
ALMA THOMAS (1891-1978)
Pink of Spring
 signed with the artist's initials and dated 'AWT 73' (lower right); signed, inscribed, titled and dated again "'Pink of Spring' '73 Alma W. Thomas Wash., D.C.' (on the overlap)
 acrylic on canvas
 30 x 36 in. (76.2 x 91.4 cm.)
 Painted in 1973.
 \$500,000-700,000



108
SAM GILLIAM (1933-2022)
Frost Tempo
 signed, titled and dated 'FROST TEMPO, 77 Sam Gilliam' (on the reverse)
 acrylic on unstretched canvas
 canvas: 58 3/8 x 184 in. (148.9 x 467.4 cm.)
 installation dimensions variable
 Executed in 1977.
 \$200,000-300,000



109
SAM GILLIAM (1933-2022)
Untitled
 signed and dated 'Sam Gilliam, 2021' (lower right)
 watercolor on washi paper
 39 3/4 x 71 3/4 in. (99.7 x 181.3 cm.)
 Executed in 2021.
 \$80,000-120,000



104
REGGIE BURROWS HODGES (B. 1965)
Playing Dub Records at Lincoln Street
 acrylic and oil pastel on canvas
 11 x 13 3/8 in. (27.9 x 35.2 cm.)
 Executed in 2019.
 \$60,000-80,000



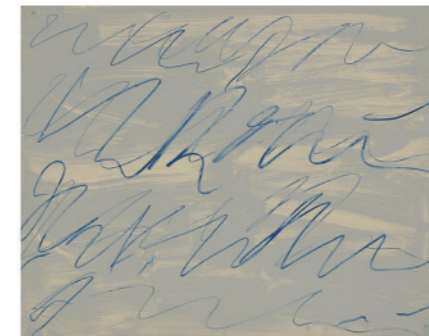
105
MATT CONNORS (B. 1973)
Clockwise
 signed and dated '2018 Matt Connors' (on the reverse)
 acrylic on canvas
 27 1/2 x 24 1/2 in. (69.9 x 62.2 cm.)
 Painted in 2018.
 \$25,000-35,000



106
JOE OVERSTREET (1933-2019)
Untitled
 signed with the artist's initials and dated 'JO 1970' (on the reverse)
 acrylic on canvas with metal grommets and cotton rope
 canvas: 34 x 20 1/4 in. (86.4 x 51.4 cm.)
 installation dimensions variable
 Executed in 1970.
 \$30,000-50,000



PROPERTY FROM THE COLLECTION OF SHIRLEY ROSS DAVIS
110
WAYNE THIEBAUD (1920-2021)
Peppermint Stick
 incised with the artist's signature and date 'Thiebaud 2011' (upper right); signed and dated 'Thiebaud 2011' (on the reverse)
 oil on canvas
 9 x 12 in. (22.9 x 30.5 cm.)
 Painted in 2011.
 \$400,000-600,000



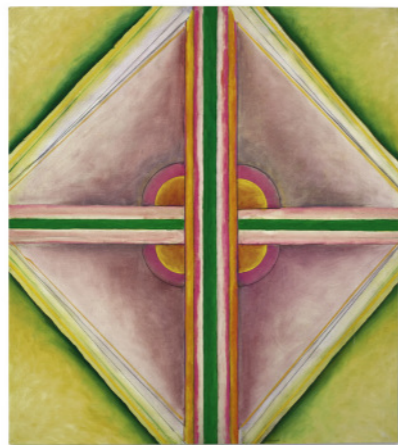
PROPERTY FROM THE COLLECTION OF SHIRLEY ROSS DAVIS
111
CY TWOMBLY (1928-2011)
Untitled (Roman Note)
 inscribed '3' (upper left)
 oil, wax crayon and graphite on paper laid down on panel
 27 3/8 x 34 1/2 in. (70.2 x 87.5 cm.)
 Executed in 1970.
 \$1,500,000-2,000,000



112
LYNNE DREXLER (1928-1999)
Untitled
 signed and dated 'LYNNE DREXLER 1960' (on the reverse)
 oil on canvas
 13 3/8 x 16 1/8 in. (35.2 x 42.2 cm.)
 Painted in 1960.
 \$70,000-100,000



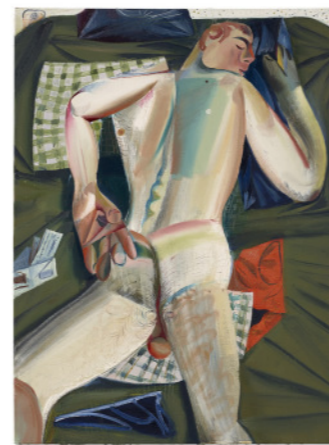
113
LYNNE DREXLER (1928-1999)
Early Morning
 signed, titled and dated 'LYNNE DREXLER EARLY MORNING 1966' (on the reverse)
 oil on canvas
 22 x 25½ in. (55.9 x 65.1 cm.)
 Painted in 1966.
 \$120,000-180,000



114
IDA KOHLMAYER (1912-1997)
Untitled
 signed and dated 'Kohlmeier 1968' (lower right)
 oil and graphite on canvas
 53¾ x 48 in. (136.5 x 121.9 cm.)
 Painted in 1968.
 \$15,000-20,000



115
SALVO (1947-2015)
Primavera
 signed and titled "'PRIMAVERA" Salvo' (on the reverse)
 oil on canvas
 31¼ x 59 in. (79.4 x 150 cm.)
 Painted in 2005.
 \$70,000-100,000



119
LOUIS FRATINO (B. 1993)
Asleep on Laundry
 signed, titled and dated "'Asleep on laundry" 2017 Louis Fratino' (on the reverse)
 oil on canvas
 24 x 18 in. (61 x 45.7 cm.)
 Painted in 2017.
 \$60,000-80,000



120
CHEN KE (B. 1978)
Bauhaus Gal No. 17 -- Marianne Brandt II
 signed in Chinese and dated '2022' (lower right); signed, signed again in Chinese, partially titled, partially titled in Chinese and dated again 'NO. 17 Marianne Brandt Chen Ke 2022' (on the reverse)
 oil on canvas
 63 x 47¼ in. (160 x 120 cm.)
 Painted in 2022.
 \$150,000-200,000



121
ALICE NEEL (1900-1984)
Linus and Ava Helen Pauling
 signed and dated 'NEEL 69' (lower left)
 oil on canvas
 48 x 42 in. (121.9 x 106.7 cm.)
 Painted in 1969.
 \$1,000,000-1,500,000



PROPERTY FROM A PROMINENT PRIVATE COLLECTION
116
RASHID JOHNSON (B. 1977)
Bruise Painting
 signed 'Rashid Johnson' (on the reverse)
 oil on linen
 48½ x 36 in. (123.2 x 91.4 cm.)
 Painted in 2021.
 \$500,000-700,000



117
LOIE HOLLOWELL (B. 1983)
Lick Lick in Blue, Green and Yellow
 signed, partially titled and dated '2015 Loie Hollowell "Lick-Lick"' (on the overlap); signed again, partially titled again and dated again 'Loie Hollowell 2015 "lick-lick" (Blue & green)' (on the reverse)
 oil on canvas mounted on panel
 48 x 36 in. (121.9 x 91.4 cm.)
 Painted in 2015.
 \$500,000-700,000



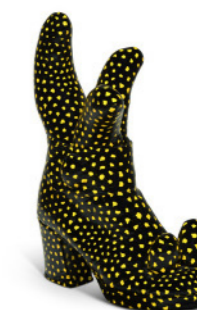
PROPERTY FROM A PROMINENT PRIVATE COLLECTION
118
LAURA OWENS (B. 1970)
Untitled
 signed 'Laura Owens' (on the overlap)
 oil and acrylic on canvas
 36 x 28 in. (91.5 x 71 cm.)
 Painted in 2016.
 \$300,000-500,000



122
SALVO (1947-2015)
Capriccio
 signed and titled 'Salvo "Capriccio"' (on the reverse)
 oil on canvas
 69¼ x 55 in. (175.9 x 139.7 cm.)
 Painted circa 2003.
 \$250,000-350,000



PROPERTY FROM THE STEFAN T. EDLIS COLLECTION
123
YOSHITOMO NARA (B. 1959)
Julien
 signed in Japanese, titled and dated 'Julien 2012' (on the reverse)
 acrylic and jute mounted on wood
 71 x 63 in. (180.5 x 160.5 cm.)
 Painted in 2012.
 \$600,000-800,000



124
YAYOI KUSAMA (B. 1929)
Untitled
 signed and dated 'YAYOI KUSAMA 1999' (on the underside)
 acrylic on sewn, stuffed fabric and shoe
 11¼ x 5 x 8½ in. (26.6 x 12.7 x 21.6 cm.)
 Executed in 1999.
 \$20,000-30,000



PROPERTY FROM AN IMPORTANT NEW YORK COLLECTION
125

JEAN DUBUFFET (1901-1985)

Personnage des légendes

signed with the artist's initials and dated 'J.D. 62' (upper right)
gouache on paper laid down on panel
sheet: 24¾ x 15¼ in. (62.9 x 40 cm.)
overall: 25¼ x 16¾ in. (64 x 41.6 cm.)
Painted in 1962.

\$250,000-350,000



PROPERTY FROM A DISTINGUISHED COLLECTION
126

JEAN DUBUFFET (1901-1985)

Site avec 5 personnages

signed with the artist's initials and dated 'J.D. 81' (lower right)
acrylic on paper mounted on canvas
20 x 13¾ in. (51 x 35 cm.)
Painted in 1981.

\$120,000-180,000



PROPERTY FROM THE COLLECTION OF AINO AND ALVAR AALTO

127

ALEXANDER CALDER (1898-1976)

Untitled

signed, dedicated and dated 'Alvar & Aino Sandy Calder 46' (lower side edge)
oil on canvas
10¼ x 18¼ in. (26 x 46.4 cm.)
Painted in 1946.

\$70,000-100,000



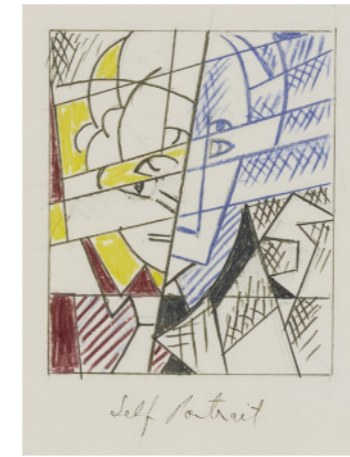
PROPERTY FROM THE DESCENDANTS OF CHUCK CLOSE
131

ROY LICHTENSTEIN (1923-1997)

Reflections: Handshake (Study)

signed and dated 'rf Lichtenstein '88' (on the reverse)
graphite and colored pencil on paper
image: 3½ x 5½ in. (8.9 x 14 cm.)
sheet: 8¾ x 9¾ in. (21.3 x 24.4 cm.)
Executed in 1988.

\$80,000-120,000



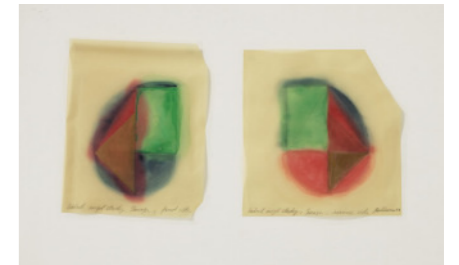
PROPERTY FROM THE DESCENDANTS OF CHUCK CLOSE
132

ROY LICHTENSTEIN (1923-1997)

Self-Portrait (Study)

titled 'Self Portrait' (center); signed and dated 'rf Lichtenstein '75' (on the reverse)
colored pencil and graphite on paper
image: 4 x 3¾ in. (10.2 x 8.6 cm)
sheet: 13¼ x 11 in. (33.7 x 27.9 cm)
Executed in 1975.

\$100,000-150,000



PROPERTY FROM THE DESCENDANTS OF CHUCK CLOSE
133

DOROTHEA ROCKBURNE (B. 1932)

Haloed Angel Study, Image, front and reversed sides

titled 'haloed angel study, Image, front side' (on the lower edge of the left sheet); signed, titled again and dated 'haloed angel study, Image, reverse side Rockburne 83' (lower edge of the right sheet)
watercolor and graphite on vellum mounted on ragboard, in two parts
left sheet: 7¾ x 6¼ in. (19.7 x 15.9 cm.)
right sheet: 7½ x 7¼ in. (19.1 x 18.1 cm.)
overall: 12 x 19¾ in. (30.5 x 49.2 cm.)
Executed in 1983.

\$10,000-15,000



PROPERTY FROM THE COLLECTION OF SHIRLEY ROSS DAVIS

128

ALEXANDER CALDER (1898-1976)

Untitled

signed, inscribed and dated 'Hotel de Versailles NOV.12/46 Calder' (lower right)
gouache, ink and pencil on paper laid down on board
10¼ x 9¼ in. (26 x 23.5 cm.)
Executed in 1946.

\$18,000-25,000



129

BEAUFORD DELANEY (1901-1979)

Red, Orange, Yellow

signed, inscribed and dated 'Beauford Delaney Paris 1963' (lower right); signed again and stamped with the Estate of Beauford Delaney stamp 'Beauford Delaney' (on the reverse)
gouache on paper
25½ x 19½ in. (64.8 x 49.5 cm.)
Executed in 1963.

\$40,000-60,000



130

KENNETH NOLAND (1924-2010)

Untitled

signed and dated 'Kenneth Noland 1965' (on the reverse)
acrylic on canvas
64¼ x 64 in. (163.2 x 162.6 cm.)
Painted in 1965.

\$300,000-500,000



PROPERTY FROM THE COLLECTION OF SHIRLEY ROSS DAVIS

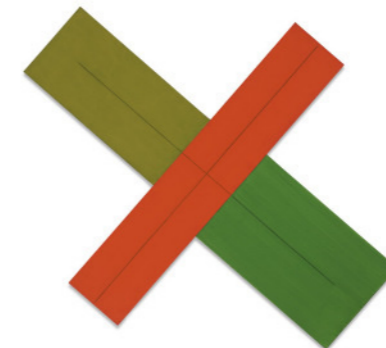
134

DONALD JUDD (1928-1994)

Untitled

stamped 'JUDD JO 87-4 BERNSTEIN BROS. INC.' (on the reverse)
anodized aluminum
5 x 40 x 8¾ in. (12.7 x 101.6 x 22.2 cm.)
Executed in 1987.

\$400,000-600,000



PROPERTY FROM THE COLLECTION OF SHIRLEY ROSS DAVIS

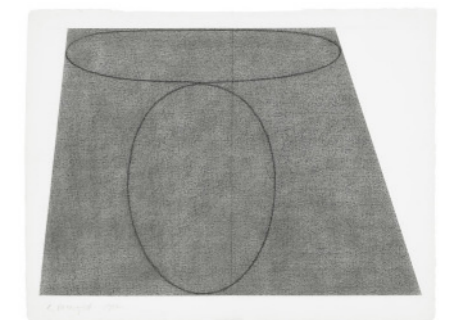
135

ROBERT MANGOLD (B. 1937)

X Within X (red-green)

signed, titled and dated 'R. Mangold 1981 Red-Green X within X' (on the reverse)
acrylic and black pencil on three joined canvases
48½ x 51½ in. (123.2 x 130.8 cm.)
Executed in 1981.

\$180,000-250,000



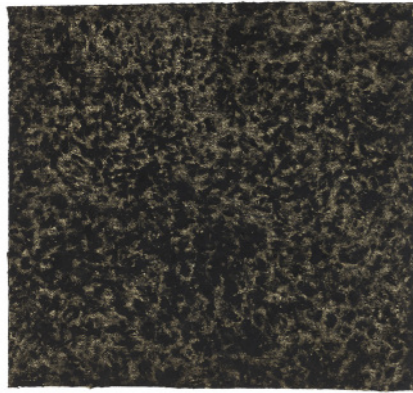
136

ROBERT MANGOLD (B. 1937)

Plane/Figure

signed and dated 'R. Mangold 1992' (lower left)
graphite and colored pencil on paper
23 x 30 in. (58.4 x 76.2 cm.)
Executed in 1992.

\$20,000-30,000



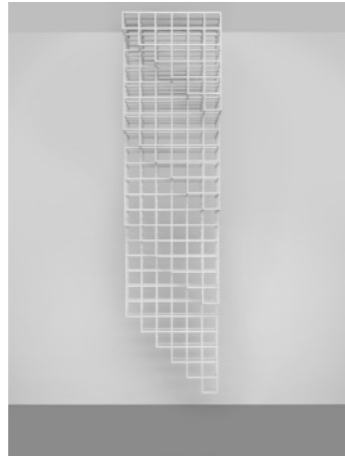
PROPERTY FROM A PRESTIGIOUS PRIVATE COLLECTION
137

RICHARD SERRA
(B.1938)

Ramble 4-24

litho crayon and pastel powder on handmade paper
34 x 36 in. (86.4 x 91.4 cm.)
Executed in 2015.

\$100,000-150,000



PROPERTY FROM THE COLLECTION OF SHIRLEY ROSS DAVIS

138

SOL LEWITT (1928-2007)
Hanging Structure 24 E

painted wood
114½ x 29 x 19½ in. (290.2 x 73.7 x 49.5 cm.)
Executed in 1991. This work is accompanied by a photo certificate of authenticity issued by the Estate of Sol LeWitt.

\$250,000-350,000



PROPERTY FROM THE DESCENDANTS OF CHUCK CLOSE

139

BRICE MARDEN (1938-2023)
Untitled

signed and dated 'B. Marden 79' (lower center)
ink on paper
29¾ x 22¼ in. (75.9 x 56.5 cm.)
Executed in 1979.

\$50,000-70,000



PROPERTY FROM AN IMPORTANT LONG ISLAND COLLECTOR

■143

THOMAS HOUSEAGO
(B. 1972)

60 Thompson Street

bronze
96 x 36 x 36 in. (243.8 x 91.4 x 91.4 cm.)
Executed in 2007-2008. This work is number four from an edition of five.

\$70,000-100,000



PROPERTY FROM AN IMPORTANT LONG ISLAND COLLECTOR

■144

THOMAS HOUSEAGO
(B. 1972)

Bottle II

bronze
120 x 43 x 45 in. (304.8 x 109.2 x 114.3 cm.)
Executed in 2010. This work is number three from an edition of three plus one artist's proof and one FC.

\$100,000-150,000



PROPERTY FROM AN IMPORTANT LONG ISLAND COLLECTOR

■145

PAWEL ALTHAMER (B. 1967)

Matea

aluminum
86¾ x 111½ x 111½ in. (220.3 x 283.2 x 283.2 cm.)
Executed in 2006-2008. This work is number two from an edition of three.

\$50,000-70,000



PROPERTY FROM AN IMPORTANT LONG ISLAND COLLECTOR

■140

MARK DI SUVERO (B. 1933)

XV

steel
268 x 323 x 431 in. (680.7 x 820.4 x 1094.7 cm.)
Executed in 1971.

\$500,000-700,000



PROPERTY FROM AN IMPORTANT LONG ISLAND COLLECTOR

■141

JOAN MIRO (1893-1983)
Tête

signed and numbered 'Miró 3/4' (on the side of the base); inscribed with foundry mark 'SUSSE FRERES PARIS' (on the back of the base)
bronze with black patina
Height: 86¾ in. (220.2 cm.)
Conceived in 1974 and cast in 1990

\$700,000-1,000,000



PROPERTY FROM AN IMPORTANT LONG ISLAND COLLECTOR

■142

RICHARD LONG (B. 1945)
Bronx Ellipse

gray slate
17 x 210 x 94 in. (43.2 x 533.4 x 238.8 cm.)
Executed in 2001.

\$60,000-80,000



PROPERTY FROM AN IMPORTANT LONG ISLAND COLLECTOR

■146

AARON CURRY (B. 1972)
BIG DRAG

welded with the artist's initial 'A' (on the base); welded with the artist's signature 'A.A. Curry' (on the side edge)
painted aluminum
216 x 59½ x 118½ in. (548.6 x 151.1 x 301 cm.)
Executed in 2013.

\$18,000-25,000



PROPERTY FROM AN IMPORTANT LONG ISLAND COLLECTOR

■147

PETER COFFIN (B. 1972)
Sculpture Silhouette (D. Smith 'Voltri VIII' 1962)

powder-coated aluminum
76 x 117 x 1 in. (193 x 297.2 x 2.5 cm.)
Executed in 2007-2008.

\$6,000-8,000



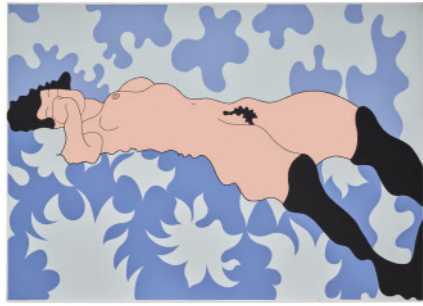
PROPERTY FROM THE COLLECTION OF SHIRLEY ROSS DAVIS

148

JOHN CHAMBERLAIN (1927-2011)
CONEYISLANDDORIC

painted and chrome-plated steel
16¾ x 18 x 15 in. (42.6 x 45.7 x 38.1 cm.)
Executed in 2008.

\$120,000-180,000



A CENTURY OF ART: THE GERALD FINEBERG COLLECTION

149

JOHN WESLEY (1928-2022)

Klimt Nude

signed, titled and dated "'KLIMT NUDE" John Wesley 1987' (on the reverse)
acrylic on canvas
59 x 83 in. (150 x 210.8 cm.)
Painted in 1987.

\$100,000-150,000



150

ANDY WARHOL (1928-1987)

S&H Green Stamp Blouse

signed 'Andy Warhol' (on the reverse of the right sleeve); signed again 'Andy Warhol' (on the inner lining)
silkscreen ink on silk blouse
21 x 26 in. (53.3 x 66 cm.)
Executed circa 1965.

\$80,000-120,000



PROPERTY FROM A PROMINENT PRIVATE COLLECTION

151

TOM WESSELMANN (1931-2004)

Smoker Study (for Smoker #14)

signed twice and dated incorrectly 'Wesselmann Wesselmann 79' (on the overlap)
oil on canvas
17 1/8 x 15 in. (43.5 x 38.1 cm.)
Painted in 1973.

\$200,000-300,000



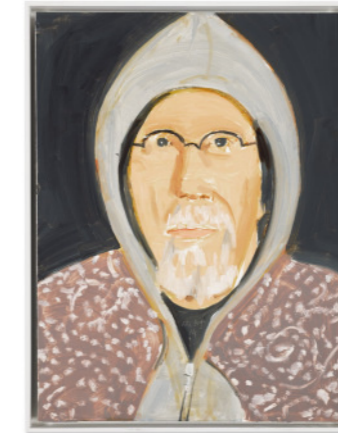
PROPERTY FROM THE DESCENDANTS OF CHUCK CLOSE

155

ALEX KATZ (B. 1927)
Ada in a White Hat and Sunglasses

incised with the artist's signature and date 'Alex Katz 07' (lower left)
oil on board
16 x 12 in. (40.6 x 30.5 cm.)
Painted in 2007.

\$60,000-80,000



PROPERTY FROM THE DESCENDANTS OF CHUCK CLOSE

156

ALEX KATZ (B. 1927)
Chuck Close

incised with the artist's signature and date 'Alex Katz 14' (lower center); signed 'Alex Katz' (on the reverse)
oil on board
15 7/8 x 11 7/8 in. (40.3 x 30.2 cm.)
Painted in 2014.

\$30,000-50,000



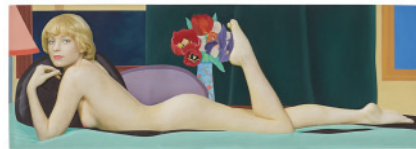
157

NEIL WELLIVER (1929-2005)

Salt Flat

signed 'Welliver' (lower right)
oil on canvas
48 x 48 in. (121.9 x 121.9 cm.)
Painted in 1973.

\$30,000-50,000



152

TOM WESSELMANN (1931-2004)

Times Square Nude

signed and dated 'Wesselmann 69/70's' (lower right)
silkscreen ink and oil on formed vinyl
13 x 37 3/4 in. (33 x 94.9 cm.)
Executed in 1969-1970s.

\$150,000-250,000



153

ROY LICHTENSTEIN (1923-1997)

Brushstroke III

signed 'rf Lichtenstein' (on the reverse); numbered '5/10' (on a plate affixed to the reverse)
painted cherry wood
64 x 27 x 11 3/4 in. (162.6 x 68.6 x 29.8 cm.)
Executed in 1985-1986. This work is number five from an edition of ten.

\$150,000-200,000



154

RICHARD PETTIBONE (B. 1938)

Andy Warhol, 'Flowers', 1964

each signed with the artist's initials and dated 'RP 71' (on the reverse)
acrylic and silkscreen ink on canvas, in artist's frame, in four parts
each: 1 3/4 x 1 3/4 in. (4.5 x 4.5 cm.)
Executed in 1971.

\$40,000-60,000



158

WAYNE THIEBAUD (1920-2021)

Cigars

signed and dated 'Thiebaud 1980 1994' (lower right); inscribed 'Color Trial Proof (unique)' (lower left)
hand-worked soft ground, spit-bite and aquatint etching with graphite and gouache on paper
image: 15 3/4 x 19 3/4 in. (40 x 50.2 cm.)
sheet: 21 3/4 x 25 1/2 in. (55.2 x 64.8 cm.)
Executed in 1980-1994. This work is unique.

\$80,000-120,000



159

ERNIE BARNES (1938-2009)

Preacher with Blue Book

signed 'ERNIE BARNES' (lower right)
oil on canvas
19 7/8 x 29 7/8 in. (50.5 x 75.9 cm.)
Painted in 1973.

\$60,000-80,000



A LIFE AMONG ART: THE COLLECTION OF RUTH MILES PITE

160

FAITH RINGGOLD (B. 1930)

Kente Mask #3

signed, titled and dated 'KENTE MASK #3 1976 FAITH RINGGOLD' (on a fabric label affixed to the reverse)
Kente cloth, fabric, cowrie shells, raffia, beads and stones
32 x 10 x 5 in. (81.3 x 25.4 x 12.7 cm.)
Executed in 1976.

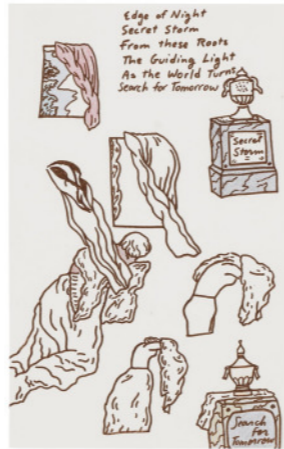
\$30,000-50,000



161
RICHARD HUNT (1935-2023)
Entwined
 signed and numbered 'R Hunt 2/5' (lower edge)
 nickel bronze
 8½ x 3¼ x 4 in. (21.6 x 8.3 x 10.2 cm.)
 Executed in 1974. The work is number two from
 an edition of five.
 \$4,000-6,000



162
RICHARD HUNT (1935-2023)
Untitled
 incised with the artist's signature and number 'R
 Hunt 6/10' (lower edge)
 bronze with brown patina
 7¾ x 4 x 2¼ in. (19.7 x 10.2 x 5.7 cm.)
 Executed circa 1979. This work is number six
 from an edition of ten.
 \$4,000-6,000



163
CHRISTINA RAMBERG
 (1946-1995)
Untitled (Soap Operas)
 felt-tip pen and colored pencil on paper
 8 x 5 in. (20.3 x 12.7 cm.)
 Executed in 1968.
 \$5,000-7,000



167
ELAINE DE KOONING
 (1918-1989)
Untitled
 signed and dated 'E. de K. '56' (lower right)
 watercolor on paper
 17½ x 11½ in. (44.8 x 30.2 cm.)
 Executed in 1956.
 \$15,000-20,000



168
ROBERT MOTHERWELL
 (1915-1991)
Black with Ochre
 signed with the artist's initials and dated 'RM 67'
 (upper right)
 acrylic, ink and graphite on paper
 30 x 22 in. (76.2 x 55.9 cm.)
 Executed in 1967.
 \$80,000-120,000



PROPERTY FROM A DISTINGUISHED COLLECTION
169
ADOLPH GOTTLIEB
 (1903-1974)
White Halo
 signed, inscribed and dated 'Adolph Gottlieb 1970
 3' (lower left); stamped with the Adolph & Esther
 Gottlieb Foundation, Inc. stamp and Estate of
 Adolph Gottlieb stamp (on the reverse)
 oil on paper
 24 x 18¾ in. (61 x 47.9 cm.)
 Executed in 1970.
 \$100,000-150,000



164
HANNAH WILKE (1940-1993)
Bird and Bananas
 signed and dated 'Wilke '72' (lower right)
 watercolor, graphite and printed paper collage
 on paper
 17½ x 23¾ in. (45.4 x 60.6 cm.)
 Executed in 1972.
 \$8,000-12,000



PROPERTY FROM THE DESCENDANTS OF CHUCK CLOSE
165
PETER SAUL (B. 1934)
Be Sick
 signed, titled and dated 'BE SICK '87 SAUL'
 (lower right)
 colored pencil and graphite on paper
 13¾ x 10 in. (34 x 25.4 cm.)
 Executed in 1987.
 \$10,000-15,000



PROPERTY FROM THE DESCENDANTS OF CHUCK CLOSE
166
WILLEM DE KOONING
 (1904-1997)
Studies of Women
 graphite and colored crayon on double-sided
 paper
 13¾ x 17 in. (35 x 43.2 cm.)
 Executed circa 1951.
 \$200,000-300,000



170
JOSEPH CORNELL
 (1903-1972)
Constellation Variant
 signed 'Joseph Cornell' (in reverse on a paper label
 affixed to the reverse)
 wood box construction—wood, glass, metal, mixed
 media collage, nails and paint
 8½ x 12¾ x 3½ in. (20.6 x 32.1 x 8.9 cm.)
 Executed in 1955-1958.
 \$80,000-120,000



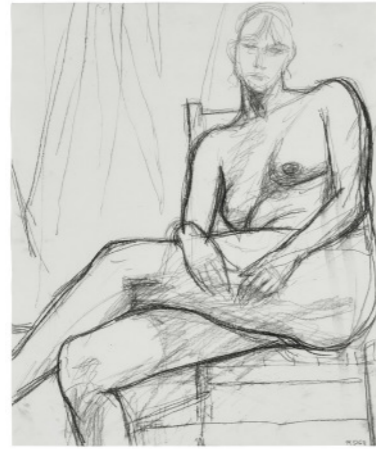
171
ARSHILE GORKY (1904-1948)
Still Life
 signed 'Gorky' (lower right); signed again and
 titled 'Arshile Gorky Still Life' (on the reverse)
 oil on canvas
 16 x 24 in. (40.6 x 61 cm)
 Painted in 1928.
 \$60,000-80,000



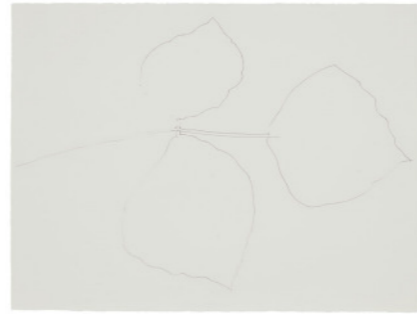
PROPERTY FROM AN EXCEPTIONAL PRIVATE COLLECTION
172
JEAN DUBUFFET (1901-1985)
Situation XXXV
 signed with the artist's initials and dated 'J.D. 78'
 (lower center)
 felt-tip pen and paper collage on paper
 13¾ x 10 in. (35 x 25.5 cm.)
 Executed in 1978.
 \$30,000-40,000



173
RICHARD DIEBENKORN
 (1922-1993)
Untitled
 signed with the artist's initials and dated 'RD 81' (lower right)
 gouache and crayon on paper
 12½ x 10⅞ in. (31.8 x 27.6 cm.)
 Executed in 1981.
 \$40,000-60,000



PROPERTY FROM THE COLLECTION OF SHIRLEY ROSS DAVIS
174
RICHARD DIEBENKORN
 (1922-1993)
Untitled (Seated Nude with Legs Crossed)
 signed with the artist's initials and dated 'RD 68' (lower right)
 charcoal on paper
 16⅞ x 13⅞ in. (42.9 x 35.2 cm.)
 Executed in 1968.
 \$10,000-15,000



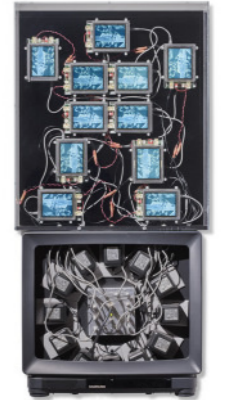
175
ELLSWORTH KELLY
 (1923-2015)
Coral Leaf 5
 signed, titled and dated 'CORAL LEAF Kelly 1987' (on the reverse)
 ink on paper
 22¾ x 30 in. (56.8 x 76.2 cm.)
 Executed in 1987.
 \$40,000-60,000



PROPERTY FROM THE COLLECTION OF SHIRLEY ROSS DAVIS
179
GERHARD RICHTER (B. 1932)
Cross
 stamped with the artist's name, number and date '61/80 Gerhard Richter 1997' (on the reverse)
 steel
 7⅞ x 7⅞ x ⅝ in. (19.4 x 19.4 x 1.6 cm.)
 Executed in 1970. This work is number sixty-one from an edition of eighty.
 \$7,000-10,000



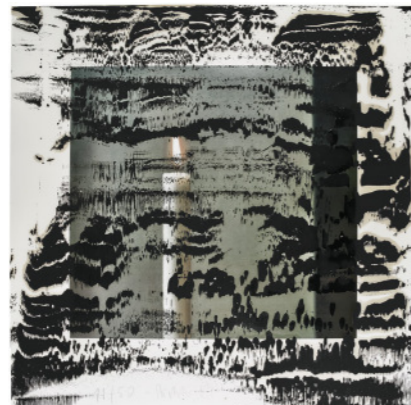
PROPERTY FROM THE COLLECTION OF SHIRLEY ROSS DAVIS
180
ANSELM KIEFER (B. 1945)
Der Rhein
 titled 'Der Rhein' (center upper edge); signed and dated 'Anselm Kiefer 1983' (center right)
 forty-four pages—oil, acrylic and shellac on woodcut mounted on cardboard
 sheet: 23¼ x 16½ in. (59 x 42 cm.)
 open: 23¼ x 33¼ in. (59 x 84.5 cm.)
 overall: 23¼ x 16½ x 2¾ in. (59 x 42 x 7 cm.)
 Executed in 1983.
 \$80,000-120,000



PROPERTY FROM THE COLLECTION OF SHIRLEY ROSS DAVIS
181
NAM JUNE PAIK (1932-2006)
Circuit Bored
 signed 'Paik '94' (right side edge)
 single-channel video installation with eleven 4.5-inch LCD monitors, Plexiglas box, CRT case, Sony DVP-SR200P player, two DVDs, and electrical elements
 42 x 20½ x 5½ in. (106.7 x 52.1 x 14 cm.)
 Executed in 1994.
 \$150,000-200,000



PROPERTY FROM THE COLLECTION OF SHIRLEY ROSS DAVIS
176
ELLSWORTH KELLY
 (1923-2015)
Beach Plant
 signed, titled and dated 'BEACH PLANT Kelly 84' (on the reverse)
 graphite on paper
 30⅞ x 20 in. (76.5 x 50.8 cm.)
 Executed in 1984.
 \$60,000-80,000



PROPERTY FROM THE COLLECTION OF SHIRLEY ROSS DAVIS
177
GERHARD RICHTER (B. 1932)
Kerze II
 signed, numbered and dated '11/50 Richter 89' (lower left); signed again, numbered again and dated again '11/50 Richter, 89' (on the reverse)
 oil on offset print on paper flush-mounted on plastic
 35½ x 35½ in. (90.2 x 90.2 cm.)
 Executed in 1989. This work is number eleven from an edition of fifty.
 \$70,000-90,000



PROPERTY FROM THE COLLECTION OF SHIRLEY ROSS DAVIS
178
GERHARD RICHTER (B. 1932)
Firenze
 signed, numbered and dated '58/99 Richter, 2000' (on the reverse)
 oil on color photograph
 4¾ x 4¾ in. (12 x 12 cm.)
 Executed in 2000. This work is number fifty-eight from an edition of ninety-nine.
 \$40,000-60,000



PROPERTY FROM THE COLLECTION OF SHIRLEY ROSS DAVIS
182
DAVID HOCKNEY (B. 1937)
The Studio Meeting
 numbered '8/25' (lower left); signed and dated 'David Hockney 2015' (lower right)
 photographic drawing printed on paper flush-mounted on Dibond
 33⅞ x 45¾ in. (84.1 x 116.2 cm.)
 Executed in 2015. This work is number eight from an edition of twenty-five.
 \$60,000-80,000



PROPERTY FROM THE COLLECTION OF SHIRLEY ROSS DAVIS
183
RINEKE DIJKSTRA (B. 1959)
Kolobrzeg, Poland, July 26, 1992
 chromogenic print flush-mounted on aluminum
 56¾ x 47¼ in. (144.1 x 120 cm.)
 Executed in 1992. This work is from an edition of six plus two artist's proofs.
 \$30,000-50,000



PROPERTY FROM THE COLLECTION OF SHIRLEY ROSS DAVIS
184
HIRSOHI SUGIMOTO (B. 1948)
Wild Fennel, circa 1841-1842
 signed 'Sugimoto' (on a paper label affixed to the reverse)
 toned gelatin silver print flush-mounted on aluminum, in artist's frame
 image: 36⅞ x 29½ in. (68.3 x 74.9 cm.)
 overall: 48⅞ x 41½ in. (124.1 x 108 cm.)
 Executed in 2009. This work is number one from an edition of ten.
 \$30,000-50,000



PROPERTY FROM THE COLLECTION OF SHIRLEY ROSS DAVIS

185
DEBORAH BUTTERFIELD (B. 1949)
Untitled (small horse)

wood, twigs and mud
31 x 12 x 38 in. (78.7 x 30.5 x 96.5 cm.)
Executed in 1978.
\$18,000-25,000



PROPERTY FROM THE COLLECTION OF SHIRLEY ROSS DAVIS

186
SOPHIE CALLE (B. 1953)
Silence

inkjet print on fine art cotton Hahnehöhle paper mounted on aluminum, in brass-hinged wooden box
14¼ x 15¼ x 6 in. (36.2 x 38.7 x 15.2 cm.)
Executed in 2012. This work is number three from an edition of five plus one artist's proof in English, aside from an edition of five plus one artist's proof in French.
\$8,000-12,000



A CENTURY OF ART: THE GERALD FINEBERG COLLECTION

187
PETER ALEXANDER (1939-2020)
Untitled (Pink Wedge)

cast polyester resin
Executed in 1969.
9 x 5½ x 5½ in. (22.9 x 14 x 14 cm.)
\$15,000-20,000



191
MANOLO VALDÉS (B. 1942)
Sienna

incised with the artist's initials and numbered 'MV 6/9' (on the base)
bronze
21¼ x 22 x 17 in. (55.2 x 55.9 x 43.2 cm.)
Executed in 2007. This work is number six from an edition of nine.
\$60,000-80,000



192
MANOLO VALDÉS (B. 1942)
Matisse como Pretexto

signed and dated 'MVALDES 2004' (on the reverse)
oil and mixed media collage on burlap
69 x 49½ in. (175.3 x 125.7 cm.)
Executed in 2004.
\$120,000-180,000



A CENTURY OF ART: THE GERALD FINEBERG COLLECTION

193
LARRY RIVERS (1923-2002)
Portrait of Leonard Bernstein

signed, inscribed, titled and dated 'For L.B. (.) 47 and summer and sitting Larry R 1965' (lower right)
graphite and tape on music notation paper
14 x 16 in. (35.6 x 40.6 cm.)
Executed in 1965.
\$10,000-15,000



A CENTURY OF ART: THE GERALD FINEBERG COLLECTION

188
JOHN MCCRACKEN (1934-2011)
Space

signed, titled, numbered sequentially and dated 'SPACE 2008 J McCracken 1 OF 5' (on the underside of each element)
polyester resin, fiberglass and plywood, in five parts
each: 96 x 4½ x 3 in. (243.8 x 11.4 x 7.6 cm.)
installation dimensions variable
Executed in 2008.
\$200,000-300,000



189
JOHN CHAMBERLAIN (1927-2011)
Untitled

welded and painted chromium-plated steel, acrylic and ink on paper, fabric and staple assemblage on particle board, in artist's frame
13% x 13% x 5% in. (34.6 x 34.6 x 14 cm.)
Executed circa 1960.
\$120,000-180,000



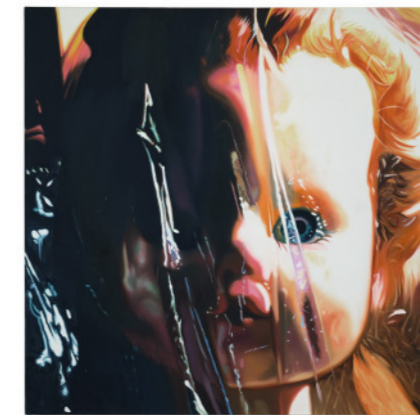
190
BERNAR VENET (B. 1941)
Lignes indéterminées Aléatoire

signed, titled and dated 'Lignes Indéterminées - Aléatoire - Venet Bernar 1991' (lower right)
oilstick and charcoal on paper
65¾ x 84¼ in. (167 x 214 cm.)
Executed in 1991.
\$60,000-80,000



A CENTURY OF ART: THE GERALD FINEBERG COLLECTION
194
AL HANSEN (1927-1995)
She Said, "You'll Have to Decide Between Me"; Lucky Lucy; Lydia Orchidia [Three Works]

\$40,000-60,000



195
JAMES ROSENQUIST (1933-2017)
The Serenade for the Doll after Claude Dubussy, Gift Wrapped Doll #4

signed, titled and dated "GIFT WRAPPED DOLL IV" James Rosenquist 1992' (on the overlap)
oil on canvas mounted on panel
60 x 60 in. (152.4 x 152.4 cm.)
Painted in 1992.
\$120,000-180,000



196
ANDY WARHOL (1928-1987)
Car Crash

stamped and dated 'Andy Warhol Enterprises, Inc., 1978' (lower right); stamped again with the Estate of Andy Warhol and the Andy Warhol Foundation for the Visual Arts, Inc. stamps and numbered 'WP890.23' and 'A171.042' (on the reverse)
silkscreen in colors on Curtis Rag paper
image: 20% x 36% in. (53 x 92.4 cm.)
sheet: 35 x 44% in. (88.9 x 114 cm.)
Executed circa 1978. This work is one of a small number of impressions.
\$50,000-70,000



197
ALICE NEEL (1900-1984)
Grade Crossing
 signed 'Neel' (lower left)
 oil on linen
 24¼ x 30½ in. (61.6 x 76.5 cm.)
 Painted circa 1935.
 \$70,000-100,000



198
HELEN FRANKENTHALER (1928-2011)
Untitled
 signed and dated 'Frankenthaler '77' (lower right)
 acrylic on paper
 25¾ x 19¼ in. (65.4 x 48.9 cm.)
 Executed in 1977.
 \$50,000-70,000



199
HANS HOFMANN (1880-1966)
Vase, Furniture and Books
 casein and oil on double-sided panel
 28½ x 22 in. (72.4 x 55.9 cm.)
 Painted in 1935.
 \$50,000-70,000



A CENTURY OF ART: THE GERALD FINEBERG COLLECTION
203
MARK TOBEY (1890-1976)
Owl's Light
 signed and dated 'Tobey 86' (lower left)
 oil on canvas
 80¼ x 45½ in. (203.8 x 115.6 cm.)
 Painted in 1968.
 \$100,000-150,000



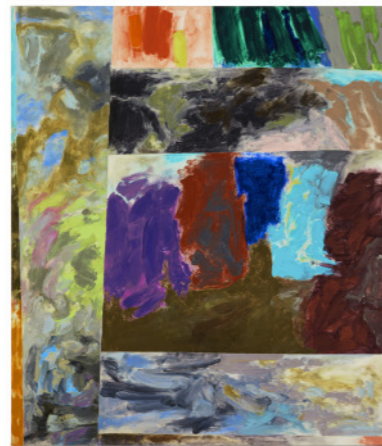
PROPERTY FROM AN IMPORTANT AMERICAN COLLECTION
204
JULES OLITSKI (1922-2007)
Fifth Coming
 signed and dated 'Jules Olitski '81' (on the reverse)
 acrylic on canvas
 66 x 47⅞ in. (167.6 x 121.6 cm.)
 Painted in 1981.
 \$30,000-50,000



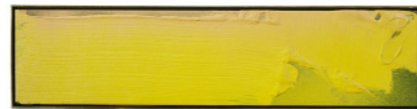
PROPERTY FROM AN EXCEPTIONAL PRIVATE COLLECTION
205
SAM FRANCIS (1923-1994)
Untitled No. 9
 signed and dated 'Sam Francis 73' (on the reverse)
 acrylic and oil on canvas
 84 x 72 in. (213.4 x 182.9 cm.)
 Painted in 1973.
 \$180,000-250,000



200
ELAINE DE KOONING (1918-1989)
Untitled (Black Mountain #13)
 signed 'E de K' (on the stretcher)
 enamel and paper collage mounted on canvas
 35⅞ x 38½ in. (89.2 x 97.8 cm.)
 Executed in 1948.
 \$25,000-35,000



201
FRIEDEL DZUBAS (1915-1994)
Extravaganza
 acrylic on canvas
 87 x 73½ in. (221 x 186.7 cm.)
 Painted in 1989.
 \$80,000-120,000



PROPERTY FROM AN IMPORTANT AMERICAN COLLECTION
202
JULES OLITSKI (1922-2007)
Around Us - 8
 signed and dated 'Jules Olitski '82' (on the reverse)
 acrylic on canvas
 18⅞ x 80½ in. (47.9 x 204.5 cm.)
 Painted in 1982.
 \$20,000-30,000



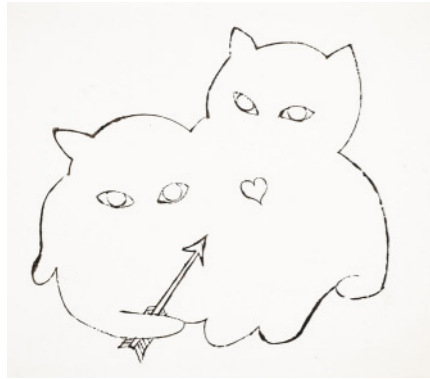
206
KIKUO SAITO (B. 1939)
Three Hills
 signed, titled and dated 'Three Hills 1981 Kikuo Saito' (on the reverse)
 acrylic on canvas
 55⅞ x 43 in. (141.3 x 109.2 cm.)
 Painted in 1981.
 \$30,000-50,000



207
JOSEPH CORNELL (1903-1972)
Untitled (Requires Blue Glass)
 signed 'Joseph Cornell' (on the reverse); stamped with the title 'Requires Blue Glass' (on the reverse)
 printed paper collage on board, in artist's frame
 7⅞ x 9¼ in. (18.1 x 23.5 cm.)
 Executed in 1958.
 \$20,000-30,000



A CENTURY OF ART: THE GERALD FINEBERG COLLECTION
208
JOSEPH CORNELL (1903-1972)
"The Journeying Sun" for Samuel Taylor Coleridge
 signed, inscribed, titled twice and dated "'The Journeying Sun" for S.T. Coleridge "The Journeying Sun" for Samuel Taylor Coleridge Joseph Cornell Autumn 1963' (on the reverse)
 printed paper collage, in artist's frame
 11½ x 14⅞ in. (29.2 x 36.5 cm.)
 Executed in 1963.
 \$30,000-50,000



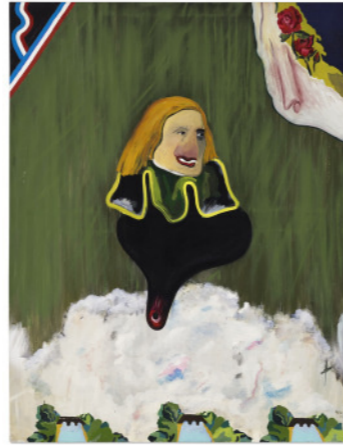
209
ANDY WARHOL (1928-1987)
Untitled (Cat)

stamped with the Estate of Andy Warhol and the Andy Warhol Foundation for the Visual Arts, Inc. stamps and numbered 'VF 344.017' (on the reverse)
 ink on Strathmore paper
 12 $\frac{7}{8}$ x 16 $\frac{1}{4}$ in. (32.7 x 41.3 cm.)
 Executed circa 1956.
 \$9,000-12,000



A CENTURY OF ART: THE GERALD FINEBERG COLLECTION
210
PETER DREHER (1932-2020)
Kreis Mit Zentrum

signed and dated 'Peter Dreher 1967' (on the stretcher)
 oil on canvas, in artist's frame
 40 x 40 in. (129.5 x 129.5 cm.)
 Painted in 1967.
 \$20,000-30,000



211
EDUARDO ARROYO (1937-2018)
Napoleon

signed and dated 'ARROYO 64' (lower right)
 oil on canvas
 57 $\frac{1}{4}$ x 44 in. (145.3 x 111.8 cm.)
 Painted in 1964.
 \$8,000-12,000



215
LYNN CHADWICK (1914-2003)
Sitting Couple on Base II

incised with the inscription and number and stamped with the artist's monogram and Pangolin Foundry mark '6475 3/6' (on the base)
 bronze
 11 x 9 $\frac{5}{8}$ x 20 in. (27.9 x 24.4 x 50.8 cm.)
 Executed in 1972. This work is number three from an edition of six.
 \$40,000-60,000



216
GEORGE RICKEY (1907-2002)
Seascape

incised with the artist's signature, number and date '1/3 Rickey 1988' (on a blade); incised again with the artist's signature and date 'Rickey 1988' (on the right wall mount)
 stainless steel, in two parts
 each blade: 72 in. long (182.9 cm.)
 overall: 84 $\frac{5}{8}$ x 63 x 10 $\frac{1}{2}$ in. (214.9 x 160 x 26.7 cm.)
 Executed in 1988. This work is number one from an edition of three.
 \$60,000-80,000



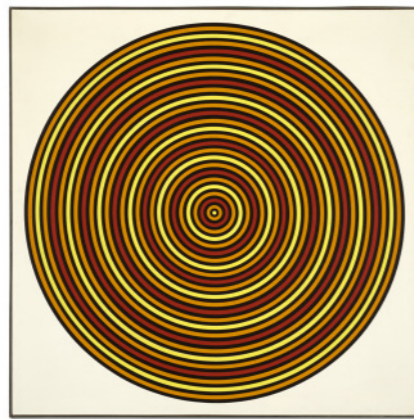
217
GEORGE RICKEY (1907-2002)
Two Lines Temporal

stamped with the artist's signature, number and date 'Rickey 1963 4/10' (on the base)
 stainless steel on wood base
 each blade: 24 in. (61 cm.)
 height: 21 $\frac{1}{2}$ in. (54.6 cm.)
 Executed in 1963. This work is number four from an edition of ten plus one artist's proof.
 \$20,000-30,000



212
ROMARE BEARDEN (1911-1988)
Guitar Executive

signed 'Romare Bearden' (upper right); signed "GUITAR EXECUTIVE" (on the reverse)
 printed paper collage and paper collage on board
 9 x 6 in. (22.9 x 15.2 cm.)
 Executed in 1979.
 \$40,000-60,000



213
TADASKY (TADASUKE KUWAYAMA) (B. 1935)
B-153

signed, titled and dated 'Tadasky 1964 #B-153' (on the reverse)
 acrylic on canvas
 47 x 47 in. (119.4 x 119.4 cm.)
 Painted in 1964.
 \$40,000-60,000



A CENTURY OF ART: THE GERALD FINEBERG COLLECTION
214
JAN MÜLLER (1922-1958)
Afternoon of Spring

signed 'Jan Muller' (on the reverse)
 oil on canvas
 65 $\frac{3}{4}$ x 75 $\frac{1}{2}$ in. (167 x 191.8 cm.)
 Painted in 1954.
 \$20,000-30,000



PROPERTY FROM A DISTINGUISHED NEW YORK COLLECTION
218
NIKI DE SAINT PHALLE (1930-2002)
Standing Nana with Serpent

incised with the artist's signature 'Niki de Saint Phalle' (on the base)
 carved and painted marble
 36 x 19 x 16 in. (91.4 x 48.3 x 40.6 cm.)
 Executed in 1992. This work is unique.
 \$120,000-180,000



219
YVES KLEIN (1928-1962)
Vénus Bleue (S 41)

stamped with the star and numbered '228/300' (on the lower edge); stamped with the artist's name, title and numbered again 'VENUS BLEUE de Yves KLEIN 228/300' (on the underside)
 dry pigment and synthetic resin on plaster
 27 $\frac{1}{8}$ x 12 $\frac{1}{2}$ x 9 $\frac{7}{8}$ in. (69.5 x 30 x 20 cm.)
 Conceived in 1962 and executed posthumously in 1982 by the Bonnier Gallery, Geneva. This work is number two hundred twenty-eight from an edition of three-hundred plus fifty hors-commerce numbered I/L to L/L and 3 copies numbered 001 to 003.
 \$80,000-120,000



301
SANYA KANTAROVSKY (B. 1982)
Stage Page

signed, titled and dated 'Stage Page 2013 Sanya Kantarovsky' (on the overlap)
 watercolor, bleach, oil and ink on linen
 47 $\frac{1}{4}$ x 35 $\frac{1}{2}$ in. (120 x 90.2 cm.)
 Executed in 2013.
 \$30,000-50,000



°302
JANIVA ELLIS (B. 1987)
Untitled (grey anvil)
 signed and dated 'Janiva Ellis 2019' (on the overlap)
 oil and graphite on canvas
 32 x 23 in. (81.3 x 58.4 cm.)
 Executed in 2019.
 \$15,000-20,000



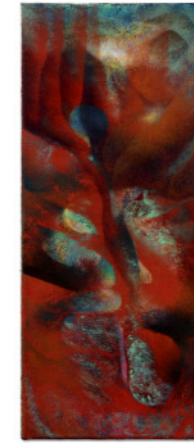
°304
WALTER PRICE (B. 1989)
I'm Tired
 signed and dated 'WALT 20 21' (on the reverse)
 acrylic, gesso, PVC glue and photo collage on wood
 40 x 30 in. (101.6 x 76.2 cm.)
 Executed in 2020-2021.
 \$35,000-45,000



305
MAYSHA MOHAMEDI (B. 1980)
California Sober
 signed, titled and dated 'CALIFORNIA SOBER MOHAMEDI 2021' (on the stretcher)
 oil and graphite on canvas
 63 x 51 in. (160 x 129.5 cm.)
 Painted in 2021.
 \$40,000-60,000



PROPERTY FROM A PROMINENT PRIVATE COLLECTION
 °309
ANNA WEYANT (B. 1995)
Riverside Drive
 signed and dated 'Anna Weyant 2020' (on the reverse)
 oil on canvas
 28 x 20 in. (71.1 x 50.8 cm.)
 Painted in 2020.
 \$150,000-200,000



310
LUCY BULL (B. 1990)
Untitled
 signed with the artist's initials and dated 'LB '19' (on the reverse)
 oil on linen
 20 7/8 x 9 in. (53 x 22.9 cm.)
 Painted in 2019.
 \$30,000-50,000



311
STANLEY WHITNEY (B. 1946)
Untitled
 signed and dated '2016 Stanley Whitney' (on the reverse)
 gouache on paper
 22 x 29 3/4 in. (55.9 x 75.6 cm.)
 Executed in 2016.
 \$25,000-35,000



WORKS SOLD TO BENEFIT THE INSTITUTE OF CONTEMPORARY ART, MIAMI
 306
ANDREA MARIE BREILING
Untitled
 signed and dated 'Andrea Marie Breiling 2023' (on the reverse)
 spray paint on canvas
 96 x 96 in. (243.8 x 243.8 cm.)
 Painted in 2023.
 \$30,000-50,000



WORKS SOLD TO BENEFIT THE INSTITUTE OF CONTEMPORARY ART, MIAMI
 307
TYLER BALLON (B. 1996)
The Salon
 signed, titled and dated "'The Salon' Tyler D Ballon 2024' (on the reverse)
 oil on canvas
 54 x 54 in. (137.2 x 137.2 cm.)
 Painted in 2024.
 \$25,000-35,000



308
CAROLINE WALKER (B. 1982)
Evening at Beauty Box Study I
 signed, titled and dated "'Evening at Beauty Box Study I' Caroline Walker 2017' (on the reverse)
 oil on paper
 25 1/4 x 18 7/8 in. (64.1 x 47.9 cm.)
 Executed in 2017.
 \$30,000-50,000



■312
RASHID JOHNSON (B. 1977)
Untitled Color Men
 black soap and wax on ceramic tiles mounted on panel
 94 1/4 x 72 1/2 x 3 in. (238.8 x 184.2 x 7.6 cm.)
 Executed in 2018.
 \$400,000-600,000



°313
DANA SCHUTZ (B. 1976)
Presenter
 signed and dated 'Dana Schutz 2021' (on the reverse)
 gouache and graphite on paper
 43 3/4 x 30 in. (111.1 x 76.2 cm.)
 Executed in 2021.
 \$60,000-80,000



PROPERTY FROM THE STEFAN T. EDLIS COLLECTION
 314
GEORGE CONDO (B. 1957)
The Return of Client No. 9
 signed and dated 'Condo 08' (on the reverse)
 oil on linen
 80 x 80 in. (203.2 x 203.2 cm.)
 Painted in 2008.
 \$800,000-1,200,000



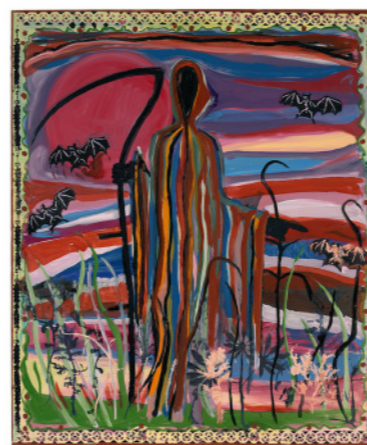
315
MARLENE DUMAS (B. 1953)
A Sigarette Before and After
 titled 'A Sigarette before and after' (lower left); signed and dated 'M DUMAS 2001' (lower right) ink wash on paper
 17½ x 13¾ in. (44.8 x 34.9 cm.)
 Executed in 2001.
 \$18,000-25,000



316
JONAS WOOD (B. 1977)
SK Dino Pot #2
 signed with the artist's initials, titled and dated 'SK DINO POT #2 JBRW 2015' (on the reverse) oil and acrylic on canvas
 90 x 68 in. (228.6 x 172.7 cm.)
 Painted in 2015.
 \$700,000-1,000,000



PROPERTY FROM THE COLLECTION OF ELLEN AND RICHARD LEVINE
317
CHRIS OFILI (B. 1968)
Untitled [Two Works]
 (i) *Untitled*
 signed and dated 'Chris Ofili '99' (on the reverse) watercolor and graphite on paper
 9½ x 6½ in. (24.4 x 15.6 cm.)
 Executed in 1999.
 (ii) *Untitled*
 watercolor and graphite on paper
 signed and dated 'Chris Ofili '98' (on the reverse)
 9 x 6 in. (22.9 x 15.2 cm.)
 Executed in 1998.
 \$15,000-20,000



321
JOSH SMITH (B. 1976)
Land of the Living
 signed, titled and dated 'Josh Smith 2019 LAND OF THE LIVING' (on the overlap) oil on linen
 72 x 60 in. (182.9 x 152.4 cm.)
 Painted in 2019.
 \$150,000-200,000



322
JOSH SMITH (B. 1976)
Untitled
 signed and dated 'JOSH SMITH 2018' (on the overlap) oil on canvas
 12 x 9 in. (30.5 x 22.9 cm.)
 Painted in 2018.
 \$8,000-12,000



PROPERTY FROM A PROMINENT PRIVATE COLLECTION
323
HILARY PECIS (B. 1979)
Sculpture Court
 signed, titled and dated 'Hilary Pecis 'Sculpture Court' 2017' (on the reverse) acrylic on canvas
 40 x 30 in. (101.6 x 76.5 cm.)
 Painted in 2017.
 \$120,000-180,000



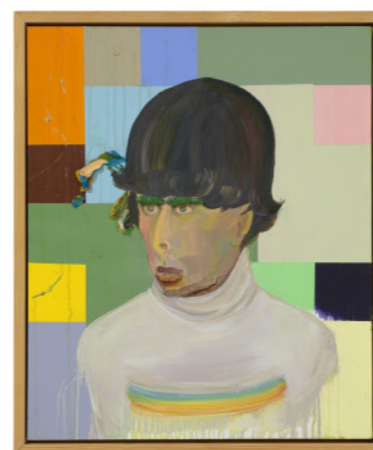
PROPERTY FROM THE COLLECTION OF PROFESSOR LAURENT JACOB
318
RASHID JOHNSON (B. 1977)
East Side
 burned red oak flooring, black soap and wax, in artist's frame
 72½ x 48½ in. (184.2 x 123.2 cm.)
 Executed in 2013.
 \$80,000-120,000



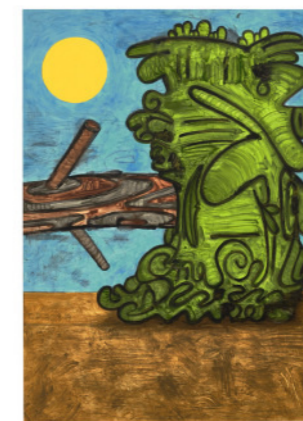
■ **319**
GLENN LIGON (B. 1960)
Notes for a Poem on the Third World (chapter one)
 neon and paint, in two parts
 overall: 84 x 155 in. (213.4 x 393.7 cm.)
 Executed in 2018. This work is number two from an edition of five plus two artist's proofs.
 \$400,000-600,000



320
DAVID HAMMONS (B. 1943)
Flies in a Bottle
 signed and dated 'Hammons 96' (on the underside) plastic bottle, wood, metal zipper sliders and glue
 12 x 4 x 4 in. (30.5 x 10.2 x 10.2 cm.)
 Executed in 1996.
 \$50,000-70,000



324
DANA SCHUTZ (B. 1976)
Untitled (Jockey)
 signed and dated 'Dana Schutz 2000' (on the reverse) oil on canvas
 27½ x 23 in. (70.2 x 58.4 cm.)
 Painted in 2000.
 \$70,000-100,000



■ **325**
CARROLL DUNHAM (B. 1949)
Tree 3
 signed with the artist's initials and dated 'C.D. 2018-19' (lower left); signed, titled again and dated again "'Tree 3" 2018-19 C. Dunham' (on the stretcher bar) urethane, acrylic and graphite on linen
 84 x 60 in. (213.4 x 152.4 cm.)
 Executed in 2018-2019.
 \$300,000-400,000



326
MARK TANSEY (B. 1949)
Study for "Repairing the Wheel"
 signed 'Tansey '97' (lower left); signed again 'Tansey' (on the overlap); signed thrice, titled and dated 'Tansey 1997-8 STUDY FOR "REPAIRING THE WHEEL"' (on the backing board) oil on canvas
 38 x 30 in. (96.5 x 76.2 cm.)
 Painted in 1997-1998.
 \$250,000-350,000



327

LUCAS ARRUDA (B. 1983)

Untitled

signed and dated 'Lucas Arruda 2012' (on the reverse)
oil on canvas
11¾ x 15¾ in. (29.8 x 40 cm.)
Painted in 2012.
\$100,000-150,000



PROPERTY FROM A PROMINENT PRIVATE COLLECTION

°328

MARK BRADFORD (B. 1961)

Is he a man or monster

signed, titled and dated 'IS he man or monster 2018 Mark Bradford' (on the reverse)
mixed media on canvas
30¼ x 24 in. (76.7 x 61.1 cm.)
Executed in 2018.
\$400,000-600,000

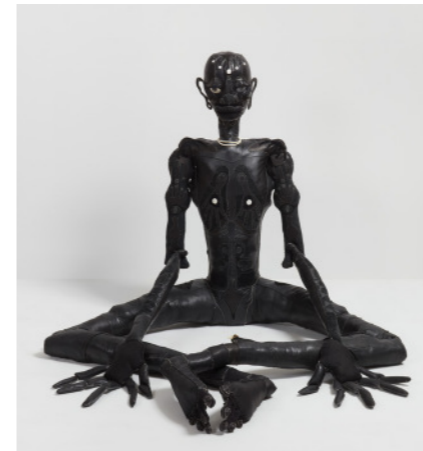


°329

STERLING RUBY (B. 1972)

WIDW. HELIOS (7030).

acrylic, oil and cardboard collage on canvas
11 x 8½ in. (27.9 x 21.6 cm.)
Executed in 2019.
\$12,000-18,000



■°333

TAU LEWIS (B. 1993)

Harmony

recycled leather, recycled polyester fibers, sand dollars, acrylic, coral, PVC pipe, wire and sea shells
49% x 59% x 54% in. (126.1 x 150.2 x 138.1 cm.)
Executed in 2021.
\$30,000-50,000



334

CHASE HALL (B. 1993)

Outside Reginald

signed and dated 'Chase Hall 2019' (on the reverse)
acrylic on canvas
20 x 16 in. (50.8 x 40.6 cm.)
Painted in 2019.
\$20,000-30,000

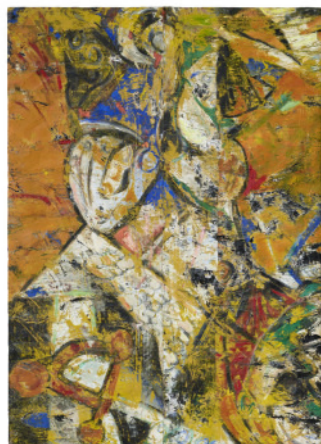


335

YINKA SHONIBARE (B. 1962)

David (after Michelangelo)

unique fiberglass sculpture, hand-painted with Dutch wax Batik pattern, bespoke hand-colored globe and gold leaf, on artist's wooden plinth
sculpture: 54% x 21% x 13 in. (138.1 x 55 x 33 cm.)
overall: 93¾ x 49¼ x 40.4/8 in. (238 x 125 x 103 cm.)
Executed in 2016.
\$70,000-100,000



330

ANGEL OTERO (B. 1981)

Shy Knight

signed, titled and dated "'Shy Knight" Angel Otero 2015' (on the reverse)
oil and oil skin collage on canvas
84 x 60 in. (213.4 x 152.4 cm.)
Executed in 2015.
\$70,000-100,000



PROPERTY FROM A PRESTIGIOUS PRIVATE COLLECTION

331

NAM JUNE PAIK (1932-2006)

Early Bird with Hierographics

signed and dated 'Paik '96' (on a glass element)
neon, glass and steel
120 x 120 x 120 in. (304.8 x 304.8 x 304.8 cm.)
Executed in 1996.
\$100,000-150,000



°332

CHEYENNE JULIEN (B. 1994)

Murano Art Glass

signed and dated 'Cheyenne Julien 2021' (on the reverse)
oil and acrylic on canvas
40 x 36 in. (101.6 x 91.4 cm.)
Painted in 2021.
\$10,000-15,000



336

DEBORAH ROBERTS (B. 1962)

We heard the thunder no. 4

signed, titled and dated 'We heard the thunder No. 4 Deborah Roberts 2017' (on the reverse)
acrylic and printed paper collage on paper
30 x 22 in. (76.2 x 55.9 cm.)
Executed in 2017.
\$30,000-50,000



337

NICHOLAS HLOBO (B. 1975)

Izichenene

signed, titled and dated 'Nicholas Hlobo, "Izichenene", 2012' (on the reverse)
ribbon and aluminum on canvas
59½ x 39¾ in. (151.1 x 101 cm.)
Executed in 2012.
\$30,000-50,000



WORKS SOLD TO BENEFIT THE AMERICAN FRIENDS OF THE MODERNA MUSEET

338

KAWS (B. 1974)

THE VISIT

signed and dated 'KAWS,,23' (on the reverse)
colored pencil on paper
image: 13 x 10¾ in. (33 x 27.3 cm.)
sheet: 15¾ x 14 in. (40 x 35.6 cm.)
Executed in 2023.
\$20,000-30,000



WORKS SOLD TO BENEFIT THE AMERICAN FRIENDS OF THE MODERNA MUSEET

339

IGSHAAN ADAMS (B. 1982)

Study for Kicking Dust

cotton twine, nylon, polyester, mixed braid and braid jute cotton rope, plastic, stone, glass and wooden beads, cotton fabric and tiger tail wire
65 x 64 1/8 (165 x 163 cm.)

Executed in 2020.

\$40,000-60,000



WORKS SOLD TO BENEFIT THE AMERICAN FRIENDS OF THE MODERNA MUSEET

340

ARTHUR Jafa (B. 1960)

Don (small)

chromogenic print on Dibond with aluminum plate stand
22 x 20 x 7 in. (55.9 x 50.8 x 17.8 cm.)

Executed in 2023.

\$8,000-12,000



WORKS SOLD TO BENEFIT THE AMERICAN FRIENDS OF THE MODERNA MUSEET

341

LISA FONSSAGRIVES-PENN (1911-1992)

Moonlight Plant

stamped with the artist's initials 'LFP' (lower right of each sheet); signed with the artist's initials 'LFP' (lower left of the left and center sheets)
aquatint on paper, in three parts
each sheet: 30 x 22 1/2 in. (76.2 x 57.2 cm.)
overall: 33 3/4 x 73 1/4 in. (85.4 x 186.1 cm.)

Executed in 1990-1991.

\$2,000-3,000



WORKS SOLD TO BENEFIT THE AMERICAN FRIENDS OF THE MODERNA MUSEET

345

ERIC FISCHL (B. 1948)

Untitled

signed 'Fischl '23' (lower right)
watercolor on rag paper
60 x 42 in. (152.4 x 106.7 cm.)

Executed in 2023.

\$30,000-50,000



WORKS SOLD TO BENEFIT THE AMERICAN FRIENDS OF THE MODERNA MUSEET

346

CRISTINA BANBAN (B. 1987)

Women Dancing

signed and dated 'Cristina BanBan 2024' (on the reverse)
ink on paper

30 x 22 1/4 in. (76 x 56.6 cm.)

Executed in 2024.

\$8,000-12,000



WORKS SOLD TO BENEFIT THE AMERICAN FRIENDS OF THE MODERNA MUSEET

347

NAN GOLDIN (B. 1953)

Self-portrait on New Year's Eve, Malibu, California

archival pigment print flush-mounted on Dibond
25 1/2 x 38 1/8 in. (64.8 x 96.8 cm.)

Executed in 2006. This work is from an edition of fifteen.

\$10,000-15,000



WORKS SOLD TO BENEFIT THE AMERICAN FRIENDS OF THE MODERNA MUSEET

342

LISA FONSSAGRIVES-PENN (1911-1992)

Seated Torso

incised with the artist's signature, number and date and stamped with the foundry mark 'EMPIRE BRONZE ART FOUNDRY INC. LISA FONSSAGRIVES-PENN 85 3/6' (lower edge)
bronze

11 1/2 x 6 x 6 3/4 in. (29.2 x 15.2 x 17.1 cm.)

Executed in 1985. This work is number three from an edition of six.

\$4,000-6,000



WORKS SOLD TO BENEFIT THE AMERICAN FRIENDS OF THE MODERNA MUSEET

343

ALEX DA CORTE (B. 1980)

Angriest Burger

digitally printed poplin, thread and foam beads
25 x 30 x 30 in. (63.5 x 76 x 76 cm.)

Executed in 2016. This work is number one from an edition of five plus two artist's proofs.

\$10,000-15,000



WORKS SOLD TO BENEFIT THE AMERICAN FRIENDS OF THE MODERNA MUSEET

344

AUSTIN LEE (B. 1983)

Concerto

signed, titled and dated "'Concerto" 2023 A Lee' (on the overlap)

acrylic on canvas
72 x 36 in. (182.9 x 91.4 cm.)

Painted in 2023.

\$15,000-20,000



348

LAURIE SIMMONS (B. 1949)

Walking Purse

signed, titled and dated 'Walking Purse 1988 L. Simmons' (on the reverse)

gelatin silver print face-mounted to Plexiglas
84 x 48 in. (213.4 x 121.9 cm.)

Executed in 1988. This work is number five from an edition of five plus two artist's proofs.

\$40,000-60,000



A CENTURY OF ART: THE GERALD FINEBERG COLLECTION

349

RICHARD PRINCE (B. 1949)

Untitled (three men's hands with watches) [Three Works]

\$100,000-150,000



A CENTURY OF ART: THE GERALD FINEBERG COLLECTION

350

RICHARD PRINCE (B. 1949)

Untitled [Four Works]

\$200,000-300,000



A CENTURY OF ART: THE GERALD FINEBERG COLLECTION
351

CINDY SHERMAN (B. 1954)

Untitled Film Still #59

signed, titled, numbered, and dated 'Cindy Sherman 8/10 1980 59' (on the reverse)
gelatin silver print
8 x 10 in. (20.3 x 25.4 cm.)
Executed in 1980. This work is number eight from an edition of ten.

\$100,000-150,000



PROPERTY FROM THE COLLECTION OF ELLEN AND RICHARD LEVINE

■352

JENNY HOLZER (B. 1950)

Living Series: It's an odd feeling when...

Bethel white granite
17 x 36 x 18 in. (43.2 x 91.4 x 45.7 cm.)
Executed in 1989. This work is number one from an edition of three plus one artist's proof.

\$60,000-80,000



353

NAN GOLDIN (B. 1953)

Cookie Mueller

each signed, titled, numbered and dated '16/25' (on the reverse)
the complete portfolio of fifteen Cibachrome prints
each image: 15 7/8 x 20 in. (40.3 x 50.8 cm.)
portfolio: 17 1/4 x 21 3/8 in. (43.8 x 54.3 cm.)
Executed in 1976-1989 and printed in 1990. This work is number sixteen from an edition of twenty-five.

\$80,000-120,000



■357

JOHN BALDESSARI (1931-2020)

Life's Balance (With Perspective)

oil tint on black-and-white photographs (upper two elements and lower left and right elements in artist's frames, lower middle element flush-mounted on aluminum), in five parts
23 3/4 x 107 1/2 in. (60.3 x 273.1 cm.)
Executed in 1987.

\$100,000-150,000



358

MARTIN WONG (1946-1999)

Untitled

signed, titled, dedicated and dated 'TO STEVE & SUE from Martin Wong 1991' (on the reverse)
acrylic on canvas
24 1/4 x 24 1/4 in. (61.6 x 61.6 cm.)
Painted in 1991.

\$60,000-80,000



PROPERTY FROM THE COLLECTION OF DORIS HILLMAN

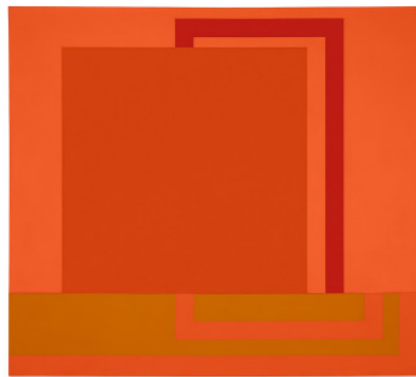
359

GEORGE CONDO (B. 1957)

Memories of Hawkins

signed, titled and dated 'Condo 85 Memories of Hawkins' (on the reverse)
oil on linen, in artist's chosen frame
22 5/8 x 19 1/4 in. (56.8 x 48.9 cm.)
Painted in 1985.

\$30,000-50,000



■354

PETER HALLEY (B. 1953)

Delayed Reaction

acrylic, fluorescent acrylic and Roll-A-Tex on two joined canvases
90 x 110 1/4 in. (228.6 x 254.6 cm.)
Executed in 1989.

\$150,000-200,000



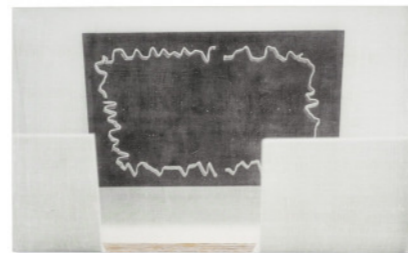
■355

CADY NOLAND (B. 1956)

Slippery Page

silkscreen ink on aluminum
48 x 120 in. (121.9 x 304.8 cm.)
Executed in 1988.

\$120,000-180,000



356

R.H. QUAYTMAN (B. 1961)

Exhibition Guide, Chapter 15 [Jagged Edge Painting In Model]

signed, titled and dated 'R. H. Quaytman, "Exhibition Guide. Chapter 15," 2009.' (on the reverse)
oil, silkscreen and gesso on panel
20 x 32 3/8 in. (50.8 x 82.3 cm.)
Executed in 2009.

\$18,000-25,000



PROPERTY FROM THE COLLECTION OF DORIS HILLMAN

360

GEORGE CONDO (B. 1957)

Monkey Boy

signed and dated 'Condo 85' (upper right)
oil on linen, in artist's chosen frame
25 7/8 x 17 3/8 in. (65.7 x 44.1 cm.)
Painted in 1985.

\$50,000-70,000



PROPERTY FROM THE COLLECTION OF DORIS HILLMAN

361

GEORGE CONDO (B. 1957)

Paper Face

signed and dated 'Condo 85' (lower left)
oil on linen, in artist's chosen frame
17 1/4 x 11 7/8 in. (43.8 x 30.2 cm.)
Painted in 1985.

\$15,000-20,000



PROPERTY FROM THE COLLECTION OF DORIS HILLMAN

362

GEORGE CONDO (B. 1957)

Trouble is Coming

signed and dated 'Condo 85' (upper right)
oil on linen, in artist's chosen frame
20 1/2 x 15 in. (52.1 x 38.1 cm.)
Painted in 1985.

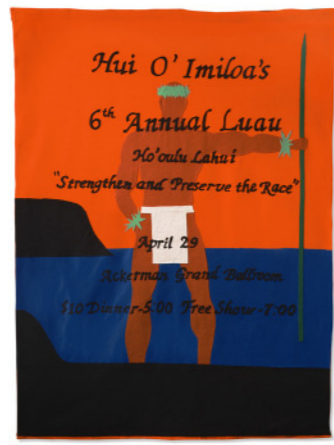
\$20,000-30,000



PROPERTY FROM THE COLLECTION OF DORIS HILLMAN

363
GEORGE CONDO (B. 1957)

The dreamer
signed and dated 'Condo 85' (lower right); signed again, titled and dated again 'Condo 85 The dreamer' (on the reverse)
oil on linen, in artist's chosen frame
14 7/8 x 13 in. (37.8 x 33 cm.)
Painted in 1985.
\$15,000-20,000



364
MIKE KELLEY (1954-2012)
Untitled (6th Annual Luau)

felt collage on felt
96 x 72 in. (243.8 x 182.9 cm.)
Executed in 1993.
\$80,000-120,000



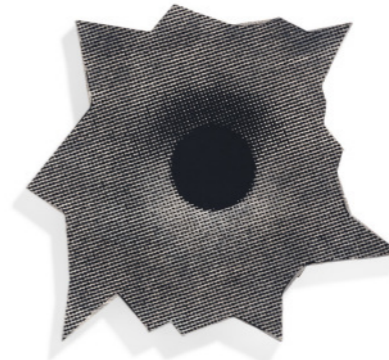
365
CHRISTOPHER WOOL (B. 1955)
Untitled

enamel on rice paper
74 x 37 1/2 in. (188 x 95.3 cm.)
Executed in 1990.
\$40,000-60,000



369
RICHARD PRINCE (B. 1949)
Untitled (Protest Painting)

acrylic, silkscreen ink, graphite and paper collage on canvas mounted on board, in three joined parts
36 1/8 x 18 1/4 in. (91.8 x 46.4 cm.)
Executed in 1989-1992.
\$150,000-200,000



370
NATE LOWMAN (B. 1979)
Untitled (Maxima)

signed and dated 'Nate Lowman 09' (on the reverse)
silkscreen ink and alkylid on canvas mounted on panel
36 x 36 in. (91.4 x 91.4 cm.)
Executed in 2009.
\$70,000-100,000



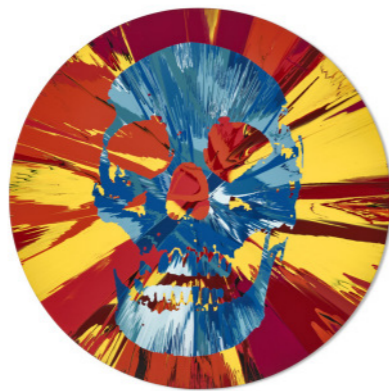
371
JOE BRADLEY (B. 1975)
Itz

signed and dated 'Joe Bradley 2007' (on the reverse of the upper element)
acrylic on canvas, in four parts
overall: 102 1/2 x 36 1/4 in. (260.4 x 92.1 cm.)
Executed in 2007.
\$60,000-80,000



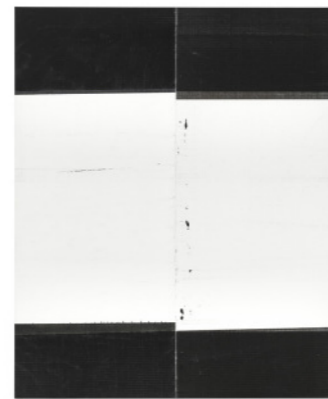
366
CHRISTIAN MARCLAY (B. 1955)
Sybil

signed and dated 'Christian Marclay 1991' (on the reverse); signed again 'Marclay' (on the backing board)
three record album covers stitched with thread, in artist's chosen frame
image: 19 1/2 x 22 3/8 in. (49.5 x 56.8 cm.)
overall: 28 x 31 in. (71.1 x 78.7 cm.)
Executed in 1991.
\$40,000-60,000



367
DAMIEN HIRST (B. 1965)
Beautiful Faunus Prophecy Painting

signed, titled and dated 'Damien Hirst 2007 "Beautiful Faunus Prophecy Painting"' (on the reverse); signed again and stamped with the artist's monogram 'Damien Hirst' (on the stretcher); stamped again with the artist's monogram (on the overlap)
household gloss on canvas
diameter: 72 in. (182.9 cm.)
Painted in 2007.
\$250,000-350,000



368
WADE GUYTON (B. 1972)
Untitled

signed and dated 'Wade Guyton 2011' (on the overlap)
Epson UltraChrome inkjet on linen
84 x 69 in. (213.4 x 175.3 cm.)
Executed in 2011.
\$250,000-350,000



372
SETH PRICE (B. 1973)
Untitled

dated '2009' (lower right)
UV-cured inkjet on high-impact polystyrene vacuum-formed over rope
95 5/8 x 48 in. (242.9 x 121.9 cm.)
Executed in 2009.
\$40,000-60,000



373
SEAN LANDERS (B. 1962)
Ibex

signed and dated 'Sean Landers 2015' (on the reverse)
oil on linen
60 x 78 in. (152.4 x 198.1 cm.)
Painted in 2015.
\$25,000-35,000



374
URS FISCHER (B. 1973)
Chlorine

aluminum panel, aramid honeycomb, two-component polyurethane adhesive, two-component epoxy primer, galvanized steel rivet nuts, steel screws, steel dowels, washers, acrylic primer, gesso, acrylic ink, acrylic silkscreen medium, acrylic paint, in two parts
overall: 130 x 162 1/4 in. (330 x 412 cm.)
Executed in 2015.
\$200,000-300,000



375

RAYMOND PETTIBON (B. 1957)

Untitled (Part of that blue heaven which you love, and long for...)

signed and dated 'Raymond Pettibon 88' (on the reverse)
oil on canvas
48 x 60 in. (121.9 x 152.4 cm.)
Painted in 1988.
\$150,000-200,000

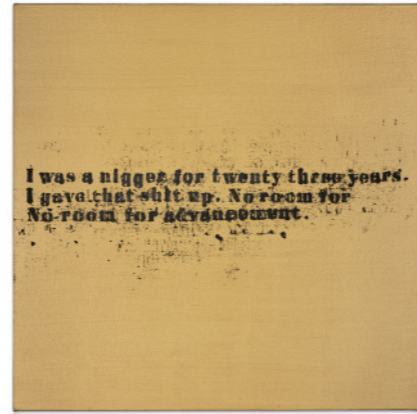


376

RAYMOND PETTIBON (B. 1957)

Untitled (There was a last vague space...)

signed and dated 'Raymond Pettibon 4-91' (on the reverse)
oil on canvas
36 x 24 in. (91.5 x 61 cm.)
Painted in 1991.
\$30,000-50,000



377

GLENN LIGON (B. 1960)

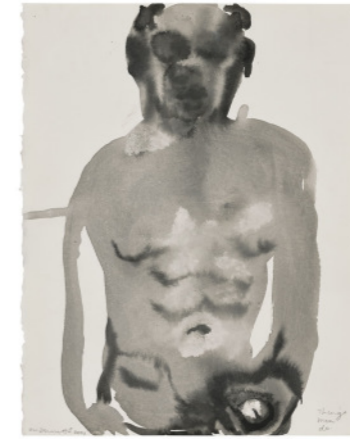
No Room (Gold) #2
signed, titled and dated 'Glenn Ligon No Room (Gold) #2 2007' (on the overlap); signed thrice, titled again and dated again 'Glenn Ligon No Room (Gold) #2 2007 Glenn Ligon' (on the backing board)
oil and acrylic on canvas
32 x 32 in. (81.3 x 81.3 cm.)
Painted in 2007.
\$100,000-150,000



381

MAJA RUZNIC (B. 1983)

Father (Yellow)
signed, inscribed, titled and dated 'Father (Yellow) Ruznic Maja 2021 Roswell, NM' (on the reverse)
oil on linen
27 7/8 x 22 in. (70.8 x 55.9 cm.)
Painted in 2021.
\$12,000-18,000



382

MARLENE DUMAS (B. 1953)

Things Men Do
signed and dated 'M DUMAS 2001' (lower left); titled 'Things Men do.' (lower right)
ink wash on paper
17 7/8 x 13 3/4 in. (44.8 x 34.9 cm.)
Executed in 2001.
\$18,000-25,000



383

WOLFGANG TILLMANS (B. 1968)

Paul, nude, golfball
signed, titled and numbered 'Paul, nude, golfball 1/10 + 1 Wolfgang Tillmans' (on the reverse)
chromogenic print
image: 13 3/8 x 11 1/8 in. (34 x 28.9 cm.)
overall: 16 x 12 in. (40.6 x 30.5 cm.)
Executed in 1994. This work is number one from edition of ten plus one artist's proof.
\$5,000-7,000



°378

GLENN LIGON (B. 1960)

Correspondence
numbered '1/18' (lower left of each sheet); signed and dated 'LIGON '19' (lower right of each sheet)
aquatint and drypoint on Hahnemühle Copperplate Bright White paper, in two parts
each image: 40 x 32 in. (101.6 x 82.3 cm.)
each sheet: 48 x 39 in. (121.9 x 99.1 cm.)
installation dimensions variable
Executed in 2019. This work is number one from an edition of eighteen plus four artist's proof.
\$40,000-60,000



379

WILL BOONE (B. 1982)

FEAR
signed and dated 'WILL BOONE 2016' (on the overlap)
acrylic on linen
100 x 75 in. (254 x 190.5 cm.)
Painted in 2016.
\$30,000-50,000

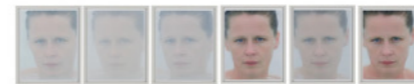


PROPERTY FROM A PRESTIGIOUS PRIVATE COLLECTION

380

RACHEL WHITEREAD (B. 1963)

Untitled (Double Vision II)
resin and cement compound
44 x 25 1/8 x 3 1/2 in. (111.8 x 63.8 x 8.9 cm.)
Executed in 2015.
\$25,000-35,000



384

RONI HORN (B. 1955)

Untitled (Weather)
color print mounted on sintra, in six parts
each: 12 1/4 x 10 1/4 in. (31.1 x 26 cm.)
Executed in 2010-2011. This work is number one from an edition of four plus one artist's proof.
\$30,000-50,000



PROPERTY FROM A PROMINENT PRIVATE COLLECTION

°385

JOHN CURRIN (B. 1962)

Untitled
signed and dated 'John Currin 2019' (on the overlap)
oil on canvas
22 1/8 x 15 1/8 in. (56 x 40.6 cm.)
Painted in 2019.
\$250,000-350,000



PROPERTY FROM A PROMINENT PRIVATE COLLECTION

°386

JOHN CURRIN (B. 1962)

Hippie
signed and dated 'John Currin 2022' (on the overlap)
oil on canvas
18 x 12 in. (45.6 x 30.7 cm.)
Painted in 2022.
\$200,000-300,000



°387
MARLEY FREEMAN (B. 1981)
Free Will
 signed and dated 'Marley Freeman 2016' (on the stretcher)
 acrylic on canvas
 43 x 43 in. (109.2 x 109.2 cm.)
 Painted in 2016.
 \$18,000-25,000



■388
AARON GARBER-MAIKOVSKA (B. 1978)
Spring Poles
 signed 'Aaron Garber-Maikovska' (on the stretcher)
 oil on fluted poly
 96½ x 140¼ in. (245.1 x 356.2 cm.)
 Executed in 2019.
 \$40,000-60,000



■389
DANIEL RICHTER (B. 1962)
Von der makellosen Schönheit des Extremhaften
 acrylic, spray paint and tape collage on paper
 81 x 59 in. (205.7 x 149.9 cm.)
 Executed in 1997.
 \$50,000-70,000



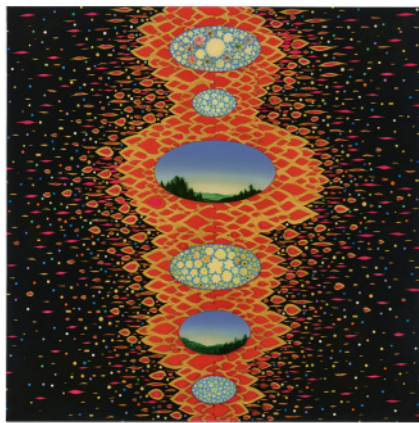
393
KEITH HARING (1958-1990)
Untitled
 signed and dated 'July 23 85 K. Haring' (lower edge)
 marker on paper
 8 x 5¾ in. (20.3 x 13.7 cm.)
 Executed in 1985.
 \$10,000-15,000



394
ERIC FISCHL (B. 1948)
Untitled (Matador)
 signed and dated 'Fischl '08' (lower right)
 watercolor on paper
 30 x 22½ in. (76.2 x 57.2 cm.)
 Executed in 2008.
 \$7,000-10,000



395
KENNY SCHARF (B. 1958)
Power Happy
 incised with the artist's signature and date 'Kenny Scharf 87' (lower right)
 oil on bronze
 57½ x 27½ x 26 in. (146.1 x 69.9 x 66 cm.)
 Executed in 1987. This work is from an edition of three, of which only one was fabricated.
 \$50,000-70,000



390
FRED TOMASELLI (B. 1956)
Scanner
 signed, titled and dated incorrectly "'Scanner" Fred Tomaselli 1995' (on the reverse)
 pills, leaves, printed paper collage, acrylic and resin on panel
 60 x 60 in. (152.4 x 152.4 cm.)
 Executed in 1999.
 \$40,000-60,000



A CENTURY OF ART: THE GERALD FINEBERG COLLECTION
 ■391
PHILIP TAAFFE (B. 1955)
Stewardess
 mixed media on canvas
 172 x 31½ in. (436.9 x 80 cm.)
 Executed in 1990-1991.
 \$25,000-35,000



PROPERTY FROM THE COLLECTION OF DORIS HILLMAN
 392
FRANCESCO CLEMENTE (B. 1952)
Self-Portrait
 pastel on paper
 26¼ x 19 in. (66.7 x 48.3 cm.)
 Executed in 1985.
 \$10,000-15,000



PROPERTY FROM THE COLLECTION OF ELLEN AND RICHARD LEVINE
 ■396
DEBORAH BUTTERFIELD (B. 1949)
Beatrice
 found steel, welded
 78 x 108 x 50 in. (198.1 x 274.3 x 127 cm.)
 Executed in 1988.
 \$80,000-120,000



397
KATHERINE BRADFORD (B. 1942)
New Diver [Three Works]
 \$10,000-15,000



398
KATHERINE BERNHARDT (B. 1975)
Socks, Nikes, Cigarettes
 signed, titled and dated 'Katherine Bernhardt 2015 Socks Nikes Cigarettes' (on the reverse)
 acrylic and spray paint on canvas
 72 x 60 in. (182.9 x 152.4 cm.)
 Painted in 2015.
 \$30,000-50,000



399
KATHERINE BERNHARDT (B. 1975)
Soccer, TV, Cellphones

signed, titled and dated 'Soccer TV Cellphones Katherine Bernhardt 2014' (on the reverse)
 acrylic and spray paint on canvas
 72 x 78 in. (182.9 x 198.1 cm.)
 Executed in 2014.
 \$25,000-35,000



400
JOAN SNYDER (B. 1940)
An Opera for Lilly

signed and dated 'Joan Snyder 1983' (on the reverse); signed again, inscribed, titled and dated again 'An Opera for Lilly' This Painting is the Property of Joan Snyder 12-5-83 Joan Snyder' (on a paper card affixed to the stretcher)
 oil, acrylic, fabric collage, velvet, synthetic fur, paper collage, wood chips, pom-poms, tape, metal, rhinestones, ink, graphite and mixed media collage on canvas
 48 x 144 in. (121.9 x 365.8 cm.)
 Executed in 1983.
 \$60,000-80,000



401
NICOLE EISENMAN (B. 1963)
Constellation

signed and dated 'Nicole Eisenman 2006' (on the overlap)
 oil on canvas
 24 x 24 in. (61 x 61 cm.)
 Painted in 2006.
 \$35,000-45,000



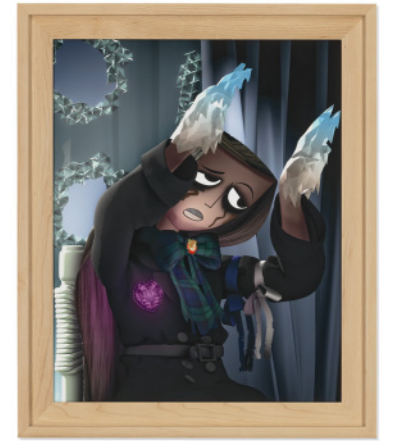
405
YUE MINJUN (B. 1962)
Hat Series No. 1

signed and dated 'yue minjun 04' (lower right); signed in Chinese, titled in Chinese and dated again 'NO 1 2004' (on the reverse)
 oil on canvas
 32 1/4 x 32 1/4 in. (81.9 x 81.9 cm.)
 Painted in 2004.
 \$80,000-120,000



406
WANG GUANGYI (B. 1957)
Great Criticism-Zippo

signed, signed in Chinese and dated 'Wang Guangyi 2000' (on the reverse)
 oil on canvas
 58 3/4 x 47 1/8 in. (149.2 x 119.7 cm.)
 Painted in 2000.
 \$60,000-80,000



407
BUNNY ROGERS (B. 1990)
Self-Portrait as clone of Jeanne d'Arc

Fine Art Print on Hahnemühle PhotoRag, in artist's frame
 27 1/2 x 22 7/8 in. (69.9 x 58.1 cm.)
 Executed in 2014. This work is number two from an edition of three plus two artist's proofs.
 \$20,000-30,000



402
NICOLE EISENMAN (B. 1963)
Crying Guy II

oil on canvas
 12 x 12 in. (30.5 x 30.5 cm.)
 Painted in 2009.
 \$12,000-18,000



403
PETER DREHER (1932-2020)
Tag um Tag guter Tag (Day by Day Good Day) Nr. 2060; Nr. 2253; Nr. 2345; Nr. 2454 [Four Works]

oil and ink on paper
 29 1/4 x 26 in. (74.3 x 66 cm.)
 Painted in 2022.
 \$20,000-30,000



404
BENDT EYCKERMANS (B. 1994)
Archive and Memory

signed and dated '2022 BENDT EYCKERMANS' (on the reverse)
 oil and ink on paper
 29 1/4 x 26 in. (74.3 x 66 cm.)
 Painted in 2022.
 \$10,000-15,000



405
IZUMI KATO (B. 1969)
Untitled

signed and dated '2022 Kato' (on the reverse of the lower canvas)
 oil on canvas, in two joined parts
 25 7/8 x 16 1/4 in. (65.7 x 41.3 cm.)
 Painted in 2022.
 \$30,000-50,000



406
HIROSHI SUGIMOTO (B. 1948)
Villa Mazzacorati, Bologna

signed 'Sugimoto' (lower right of the card); embossed with the inscription and number '1/25 34.001' (lower right margin)
 gelatin silver print mounted on card
 image: 23 x 18 1/2 in. (58.4 x 47 cm.)
 sheet: 23 1/2 x 19 1/4 in. (59.7 x 48.9 cm.)
 mount: 25 x 20 in. (63.5 x 50.8 cm.)
 Executed in 2017. This work is number one from an edition of twenty-five.
 \$12,000-18,000



410
OLAFUR ELIASSON (B. 1967)
The inner cave series

chromogenic print, in artist-appointed frame, in thirty-six parts
 each: 13 7/8 x 20 7/8 in. (35.2 x 51.8 cm.)
 overall: 99 3/4 x 140 1/2 in. (253.4 x 356.9 cm.)
 Executed in 1998. This work is number three from an edition of six plus one artist's proof.
 \$40,000-60,000



411
RINEKE DIJKSTRA (B. 1959)
Kolobrzeg, Poland, July 27, 1992 (B)
 signed and dated 'Rineke Dijkstra May 12, 2005' (on a paper label affixed to the backing board)
 chromogenic print flush-mounted on aluminum
 image: 29 $\frac{3}{8}$ x 37 $\frac{1}{8}$ in. (74.6 x 94.3 cm.)
 sheet: 41 $\frac{7}{8}$ x 48 $\frac{3}{4}$ in. (106.4 x 123.8 cm.)
 Conceived in 1992 and printed in 2005. This work is number four from an edition of ten.
 \$25,000-35,000



412
SUSUMU KAMIJO (B. 1975)
The Chill
 signed and dated 'Susumu Kamijo 2021' (on the overlap)
 Flashe Vinyl paint on canvas
 60 x 48 in. (152.4 x 121.9 cm.)
 Painted in 2021.
 \$20,000-30,000



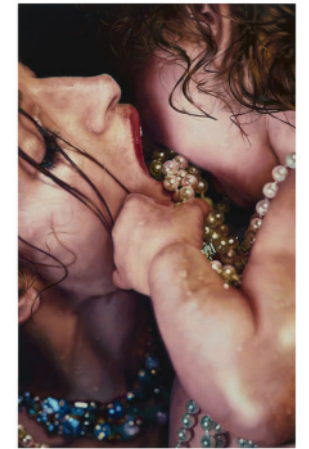
413
ROBERT NAVA (B. 1985)
Untitled
 acrylic, spray paint, grease pencil and graphite on canvas
 47 $\frac{7}{8}$ x 47 $\frac{7}{8}$ in. (121 x 121 cm.)
 Executed in 2016.
 \$60,000-80,000



417
SARAH CROWNER (B. 1974)
Untitled (after Olle)
 signed and dated 'Sarah Crowner 2008' (on the reverse)
 oil on sewn canvas and fabric
 38 x 34 in. (96.5 x 86.4 cm.)
 Executed in 2008.
 \$30,000-50,000



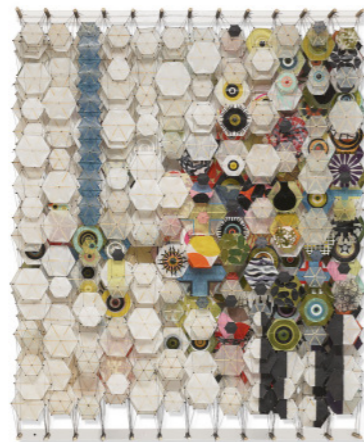
418
EMMA STERN (B. 1992)
Pearl (Heart Shaped Box)
 signed and dated 'Emma Stern 2022' (on the reverse)
 oil on canvas
 58 x 74 in. (147.3 x 188 cm.)
 Painted in 2022.
 \$15,000-20,000



419
MARILYN MINTER (B. 1948)
It's Mine
 signed, titled and dated "'IT'S MINE" M. MINTER 2007' (on the reverse)
 enamel on metal
 83 $\frac{7}{8}$ x 52 $\frac{3}{8}$ in. (213 x 133 cm.)
 Executed in 2007.
 \$60,000-80,000



414
RETNA (B. 1979)
We Stand United on this Front to Save the Lives of Our Loved Ones Let's Continue the Fight
 signed, inscribed and titled 'We Stand United on this front to Save the Lives of Our Loved Ones Let's Continue the fight Retna 2.' (on the reverse)
 acrylic, enamel and crystalline on canvas
 108 x 84 in. (274.3 x 213.4 cm.)
 Executed in 2012.
 \$40,000-60,000



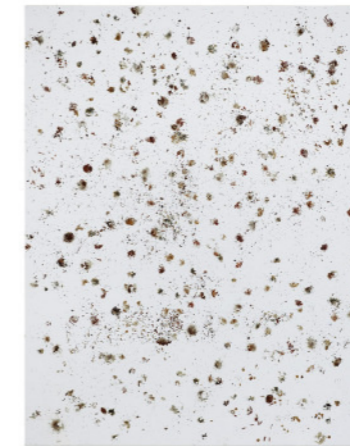
415
JACOB HASHIMOTO (B. 1973)
I Dreamt of the Slightest Sliver of Sky
 signed and dated 'JHASHIMOTO 2005' (lower right)
 acrylic, nylon thread, paper and wood
 60 x 48 x 7 $\frac{1}{2}$ in. (152.4 x 121.9 x 19.1 cm.)
 Executed in 2005.
 \$30,000-40,000



416
TOMOO GOKITA (B. 1969)
Health Club
 signed, titled and dated "'HEALTH CLUB" Tomoo Gokita 2007' (on the reverse)
 gouache on canvas
 17 $\frac{7}{8}$ x 17 $\frac{7}{8}$ in. (45.4 x 45.4 cm.)
 Painted in 2007.
 \$7,000-10,000



420
JOSH KLINE (B. 1979)
Starting Over
 polyethylene terephthalate (PET) sculptures, shopping cart, polyethylene bags, rubber, Plexiglas, LEDs, and power cord
 50 x 38 x 50 in. (127 x 96.5 x 127 in.)
 Executed in 2016. This work is number one from an edition of three plus two artist's proofs.
 \$10,000-15,000



421
DAN COLEN (B. 1979)
Weekend Millionaire
 signed, titled and dated 'Dan Colen 2010 "WEEKEND MILLIONAIRE"' (on the overlap)
 flowers on bleached Belgian linen
 126 x 96 in. (320 x 243.8 cm.)
 Executed in 2010.
 \$30,000-50,000



422
YUAN FANG (B. 1996)
Germination 02
 signed, titled and dated 'Yuan Fang Germination 02 2022' (on the reverse)
 acrylic and spray paint on canvas
 67 x 83 in. (170.2 x 210.8 cm.)
 Executed in 2022.
 \$20,000-30,000



■ 423
PAT PHILLIPS (B. 1987)
Bruh...you need to go on head and get you a shirt / Why don't you want to work for tone? / Body Armore Level 2
 acrylic, spray paint, airbrush and aerosol paint on canvas
 83 × 117 in. (210.8 × 297.2 cm.)
 Executed in 2021.
 \$18,000-25,000



424
TSCHABALALA SELF (B. 1990)
Black Joy 8 - Chocolate Lady with Pretty Teeth; Black Joy 9 - Long Neck; Black Joy 10 - Goodman
 acrylic on paper, in three parts
 26½ × 20¾ in. (67.3 × 52.7 cm.)
 Executed in 2019.
 \$50,000-70,000



425
ROBERT COLESCOTT (1925-2009)
Ladies in Waiting
 signed and dated 'R Colescott 86' (lower left)
 charcoal on paper
 61 × 42¼ in. (154.9 × 107.3 cm.)
 Executed in 1986.
 \$18,000-25,000



426
ROBERT COLESCOTT (1925-2009)
Ladies in Waiting
 signed and dated 'R Colescott 86' (lower left)
 charcoal on paper
 61½ × 42¼ in. (155.3 × 107.3 cm.)
 Executed in 1986.
 \$18,000-25,000



427
ABOUDIA (B. 1983)
Portrait de Noutchy
 signed 'ABOUDIA' (lower left)
 acrylic, oil stick and mixed media collage on board
 22¾ × 15¾ in. (57.5 × 40.3 cm.)
 Executed in 2020.
 \$7,000-10,000



428
VIK MUNIZ (B. 1961)
Two Flags, after Jasper Johns, Repro
 signed and dated 'Vik Muniz 2021' (on a paper label affixed to the reverse)
 archival inkjet print flush-mounted on aluminum
 40 × 51¼ in. (101.6 × 130.2 cm.)
 Executed in 2021. This work is number five from an edition of six.
 \$30,000-50,000

ESTIMATES AND RESERVES

Estimates are based on the condition, rarity, quality and provenance of the lots and on prices recently paid at auction for similar property. Estimates can change. No bidder or other person may rely on any estimates as a prediction or guarantee of the actual selling price of a lot or its value for any other purpose. Estimates do not include the buyer's premium or any applicable taxes. Each lot is subject to a reserve unless marked with the no reserve symbol.

FURTHER INFORMATION – NOT A CATALOGUE

This is not a catalogue for the auction. The sale of each lot is subject to the Conditions of Sale, Important Notices, and Explanation of Cataloguing Practice which are set out online, with other important sale information, at christies.com.

SYMBOLS USED IN THIS PUBLICATION AND IMPORTANT NOTICES

Please see the Conditions of Sale at christies.com for full descriptions of the symbols used in this section and for other important sale information. Please note that all lots are marked as a convenience to you and we shall not be liable for any errors in, or failure to, mark a lot.

SYMBOLS

- Christie's has a direct financial interest in the lot.
- △ Owned by Christie's or another Christie's Group company in whole or in part.
- ◆ Christie's has a direct financial interest in the lot and has funded all or part of our interest with the help of someone else.
- Bidding by interested parties.
- Lot offered without reserve which will be sold to the highest bidder regardless of the pre-sale estimate in the catalogue.
- ~ Lot incorporates material from endangered species which could result in export and/or import restrictions.
- See Storage and Collection pages in the catalogue for this sale.

© Christie's Inc. 2024

COVER

Lot 111, Cy Twombly, *Untitled (Roman Note)*, 1970.
 © Cy Twombly Foundation.

FRONTISPIECE ONE

Lot 107, Alma Thomas, *Pink of Spring*, 1973.
 © 2024 Estate of Alma Thomas (Courtesy of the Hart Family) / Artists Rights Society (ARS), New York.

FRONTISPIECE TWO

Lot 316, Jonas Wood, *SK Dino Pot #2*, 2015.
 © Jonas Wood.

OPPOSITE SALE INFORMATION

Lot 314, George Condo, *The Return of Client No. 9*, 2008.
 © 2024 George Condo / Artists Rights Society (ARS), New York.